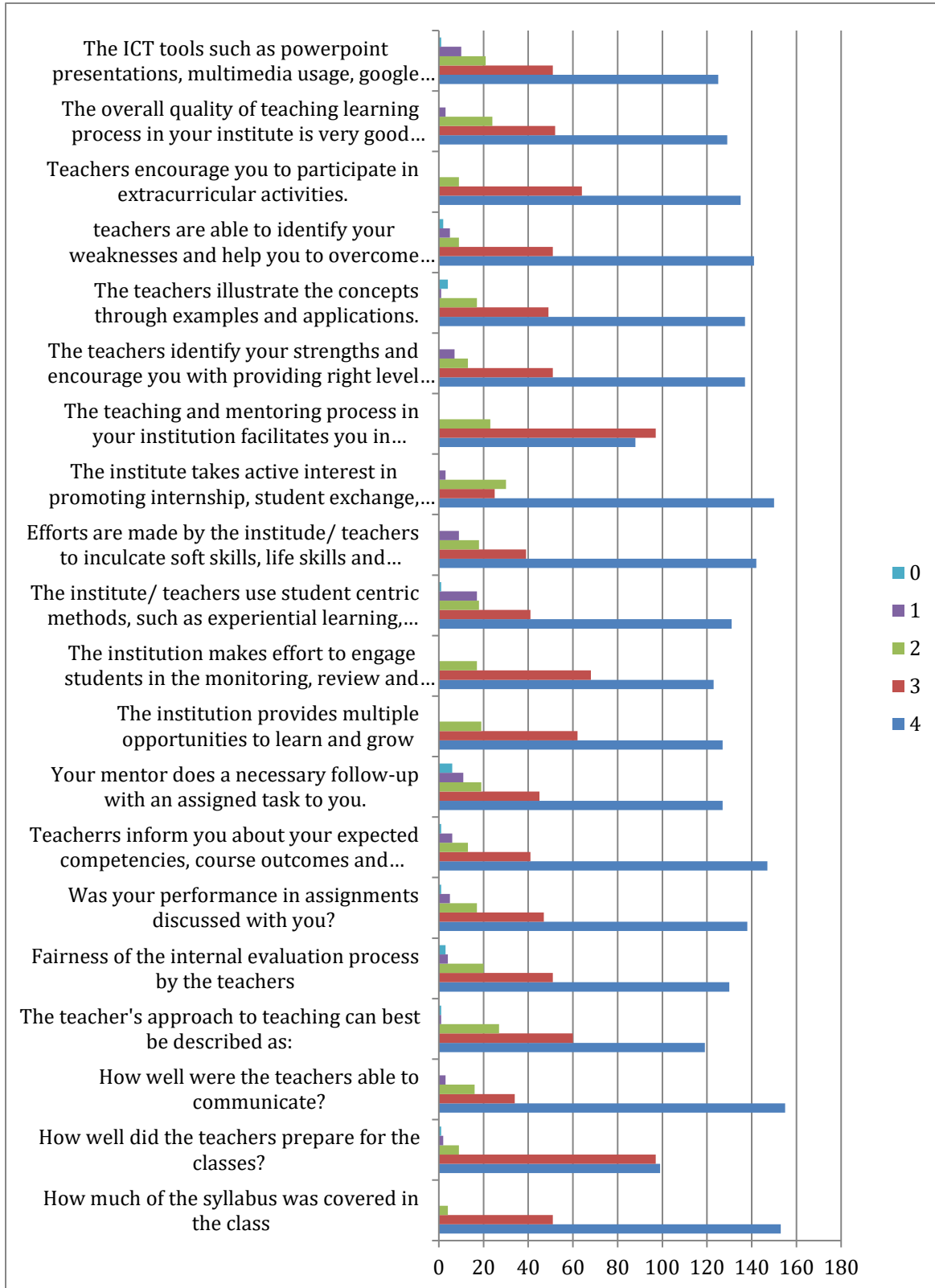
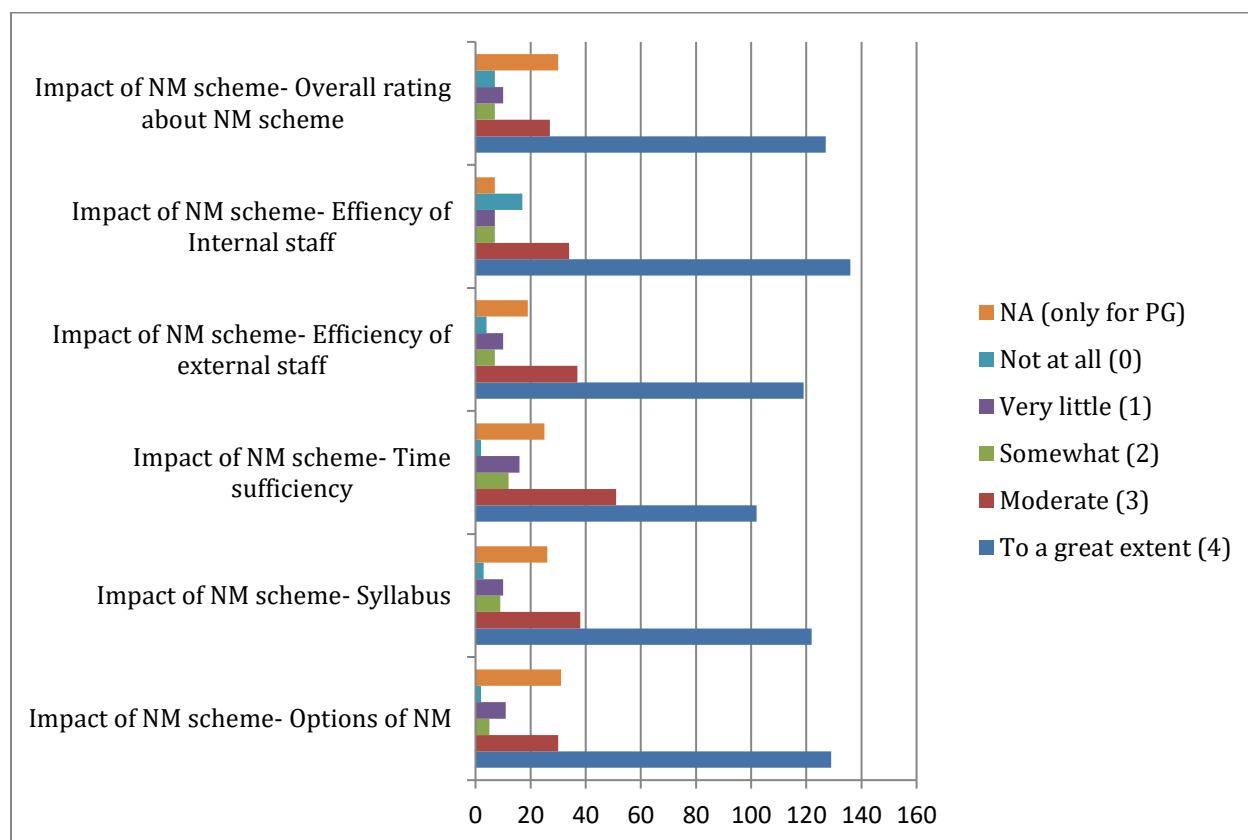


## Students Satisfaction Survey: Botany Responses 2023-2024



Response	Explanations
4	85 to 100% / Thoroughly / Always effective / Always fair / Excellent / Regularly / Significantly / Fully / Every time / Strongly Agree / To a greater extent
3	70 to 84% / Satisfactorily / Sometimes effective / Usually fair / Very Good/ Often / Very well / Reasonably / Usually / Agree / Moderate
2	55 to 69% / Poorly / Just Satisfactorily / Sometimes unfair / Good / Sometimes / Moderately / Partially /Occasionally Sometimes / Neutral / Somewhat
1	30 to 54% / Indifferently / Generally ineffective / Usually unfair / Fair / Rarely / Moderately / Slightly / Rarely / Disagree / Very little
0	Below 30% / Won't teach at all / Very Poor Communication / Poor / Never / Unable to / Not at all

### Students Satisfaction Survey: Botany Responses for Naan Mudhalvan 2023-2024



**Kunthavai Naacchiyaar Govt. Arts College for Women (Auto), Thanjavur- 613 007**  
**Students Satisfaction Survey Report (online)**  
**Department of Botany -2023-2024**  
**Total Respondents: 208**

<b>S. No</b>	<b>Major Suggestions by Students</b>	<b>Action taken</b>
1.	Career Guidance Programme	Students were placed each year through campus interviews conducted by the College Placement Cell.
2.	Computer Skills and Internet Facility for NM	Other department students can enrol in the Computer Literacy Programme certificate course to advance their computer education. The college administration has made arrangements for internet access to be available throughout the campus. Through the appropriate channels, students can use this facility for their NM classes.
4.	Attendance	In order to regularize student's attendance, a biometric attendance system is implemented and observed every day.
5.	Student participation and interaction	Students are encouraged to participate in conferences, seminars, powerpoint presentations, etc., which offer chances to get over stage fear and enhance communication.
6.	Table, Light and Fan	Regarding this, the PWD department has received a complaint. It will be implemented shortly.
7.	Microscope with good condition and specimens.	Enough specimens are provided for all practical classes, and each student receives a well- maintained microscope.



**KUNTHAVAI NAACCHIYAAR GOVERNMENT ARTS COLLEGE FOR WOMEN, THANJAVUR**  
**STUDENT SATISFACTION SURVEY REPORT 2023-24**  
**BBA RETAIL MANAGEMENT**

		<b>Online Responses -Total Students Participated 169</b>				
		<b>0 –Below 30%</b>	<b>1– 30 to 54%</b>	<b>2 – 55 to 69%</b>	<b>3 – 70 to 84%</b>	<b>4 – 85 to 100%</b>
<b>1</b>	<b>How much of the syllabus was covered in the class?</b>	0	0	2	14	153
<b>2</b>	<b>How well did the teachers prepare for the classes?</b>	<b>0 – Won't teach at all</b>	<b>1 – Indifferently</b>	<b>2 – Poorly</b>	<b>3 – Satisfactorily</b>	<b>4 –Thoroughly</b>
		0	3	3	88	75
<b>3</b>	<b>How well were the teachers able to communicate?</b>	<b>0– Very poor communication</b>	<b>1– Generally ineffective</b>	<b>2 – Just satisfactorily</b>	<b>3 – Sometimes effective</b>	<b>4 – Always effective</b>
		0	2	10	14	143
<b>4</b>	<b>The teacher's approach to teaching can best be described as</b>	<b>0– Poor</b>	<b>1 – Fair</b>	<b>2 – Good</b>	<b>3 – Very good</b>	<b>4– Excellent</b>
		0	1	8	60	100
<b>5</b>	<b>Fairness of the internal evaluation process by the teachers.</b>	<b>0– Unfair</b>	<b>1 – Usually unfair</b>	<b>2 – Sometimes unfair</b>	<b>3 – Usually fair</b>	<b>4 – Always fair</b>
		1	3	12	33	120
<b>6</b>	<b>The department takes active interest in promoting internship, student exchange, field visit opportunities for students.</b>	<b>0– Never</b>	<b>1 – Rarely</b>	<b>2 – Sometimes</b>	<b>3 – Often</b>	<b>4 – Regularly</b>
		1	4	5	42	117
<b>7</b>	<b>The teaching and mentoring process in your department facilitates you in cognitive, social and emotional growth.</b>	<b>0– Not at all</b>	<b>1 – Marginally</b>	<b>2 – Moderately</b>	<b>3 – Very well</b>	<b>4 – Significantly</b>
		2	1	3	44	119
<b>8</b>	<b>The teachers identify your strengths and encourage you with providing right level of challenges.</b>	<b>0– Unable to</b>	<b>1 – Slightly</b>	<b>2 – Partially</b>	<b>3 – Reasonably</b>	<b>4 – Fully</b>
		1	1	11	43	113



**KUNTHAVAI NAACCHIYAAR GOVERNMENT ARTS COLLEGE FOR WOMEN, THANJAVUR**  
**STUDENT SATISFACTION SURVEY REPORT 2023-24**  
**BBA RETAIL MANAGEMENT**

		Never(0)	Rarely(1)	Occasionally/ Sometimes(2)	Usually(3)	Every time(4)
9	Was your performance in assignments discussed with you?	2	0	12	37	118
10	Teachers inform you about your expected competencies, course outcomes and programme outcomes.	1	3	6	33	126
11	Your mentor does a necessary follow-up with an assigned task to you.	2	8	4	38	117
12	The teachers illustrate the concepts through examples and applications.	0	4	4	33	128
13	Teachers are able to identify your weaknesses and help you to overcome them.	3	8	11	48	99
14	The department provides multiple opportunities to learn and grow.	2	0	8	52	107
15	The department makes effort to engage students in the monitoring, review and continuous quality improvement of the teaching learning process.					



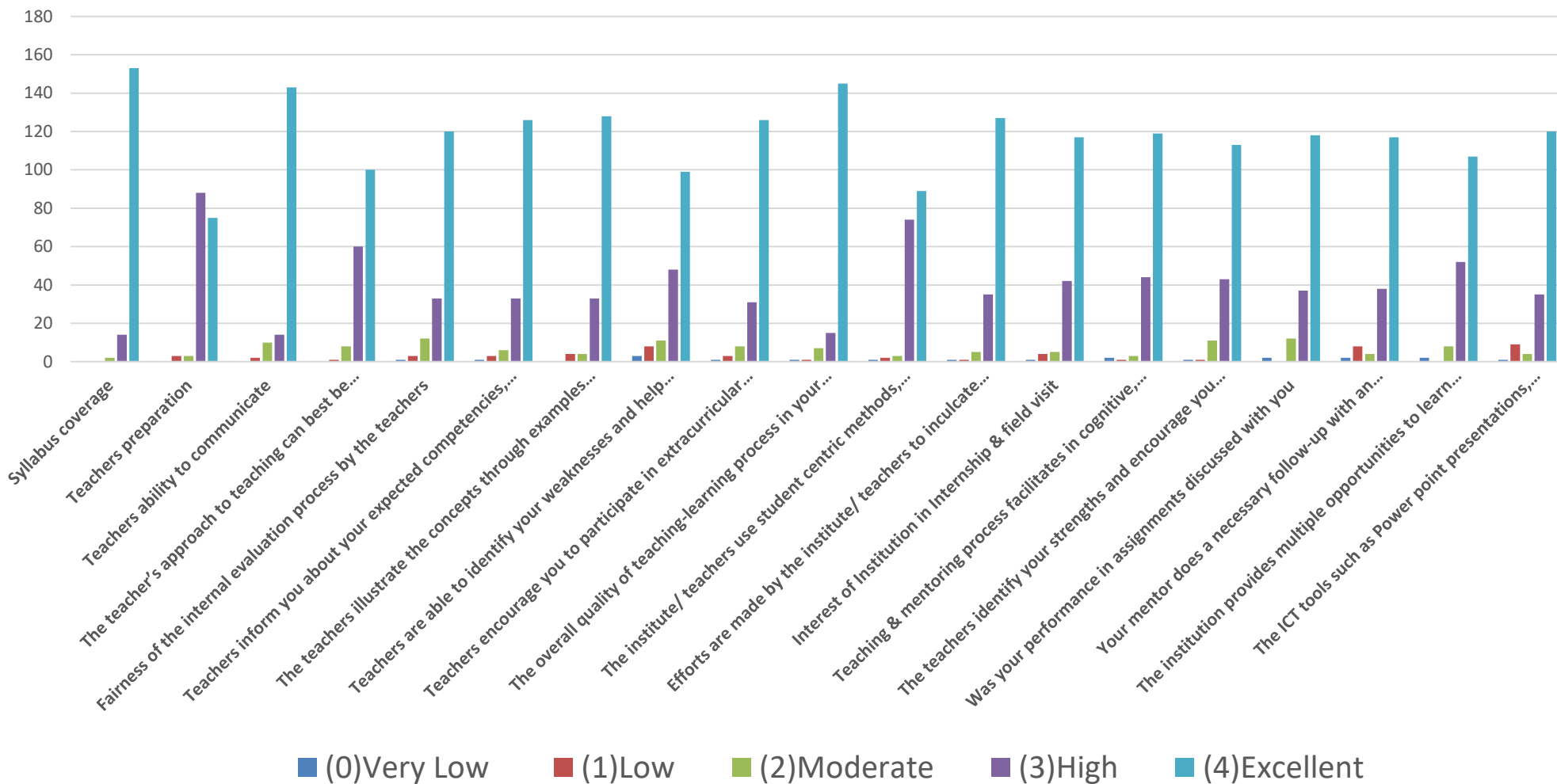
**KUNTHAVAI NAACCHIYAAR GOVERNMENT ARTS COLLEGE FOR WOMEN, THANJAVUR**  
**STUDENT SATISFACTION SURVEY REPORT 2023-24**  
**BBA RETAIL MANAGEMENT**

16	Teachers encourage you to participate in extracurricular activities.	<b>Strongly disagree(0)</b>	<b>Disagree(1)</b>	<b>Neutral(2)</b>	<b>Agree(3)</b>	<b>Strongly agree(4)</b>
		1	3	8	31	126
17	The overall quality of teaching-learning process in your department is very good.	<b>Strongly disagree(0)</b>	<b>Disagree(1)</b>	<b>Neutral(2)</b>	<b>Agree(3)</b>	<b>Strongly agree(4)</b>
		1	1	7	15	145
18	The department / teachers use student centric methods, such as experiential learning, participative learning and problem solving methodologies for enhancing learning experiences.	<b>Not at all(0)</b>	<b>Very little(1)</b>	<b>Somewhat(2)</b>	<b>Moderate(3)</b>	<b>To a great extent(4)</b>
		1	2	3	74	89
19	Efforts are made by the department / teachers to inculcate soft skills, life skills and employability skills to make you ready for the world of work.	<b>Not at all(0)</b>	<b>Very little(1)</b>	<b>Somewhat(2)</b>	<b>Moderate(3)</b>	<b>To a great extent(4)</b>
		1	1	5	35	127
20	The ICT tools such as LCD projector, Multimedia, etc. used by our department teachers is.	<b>Not at all(0)</b>	<b>Very little(1)</b>	<b>Somewhat(2)</b>	<b>Moderate(3)</b>	<b>To a great extent(4)</b>
		1	9	4	35	120



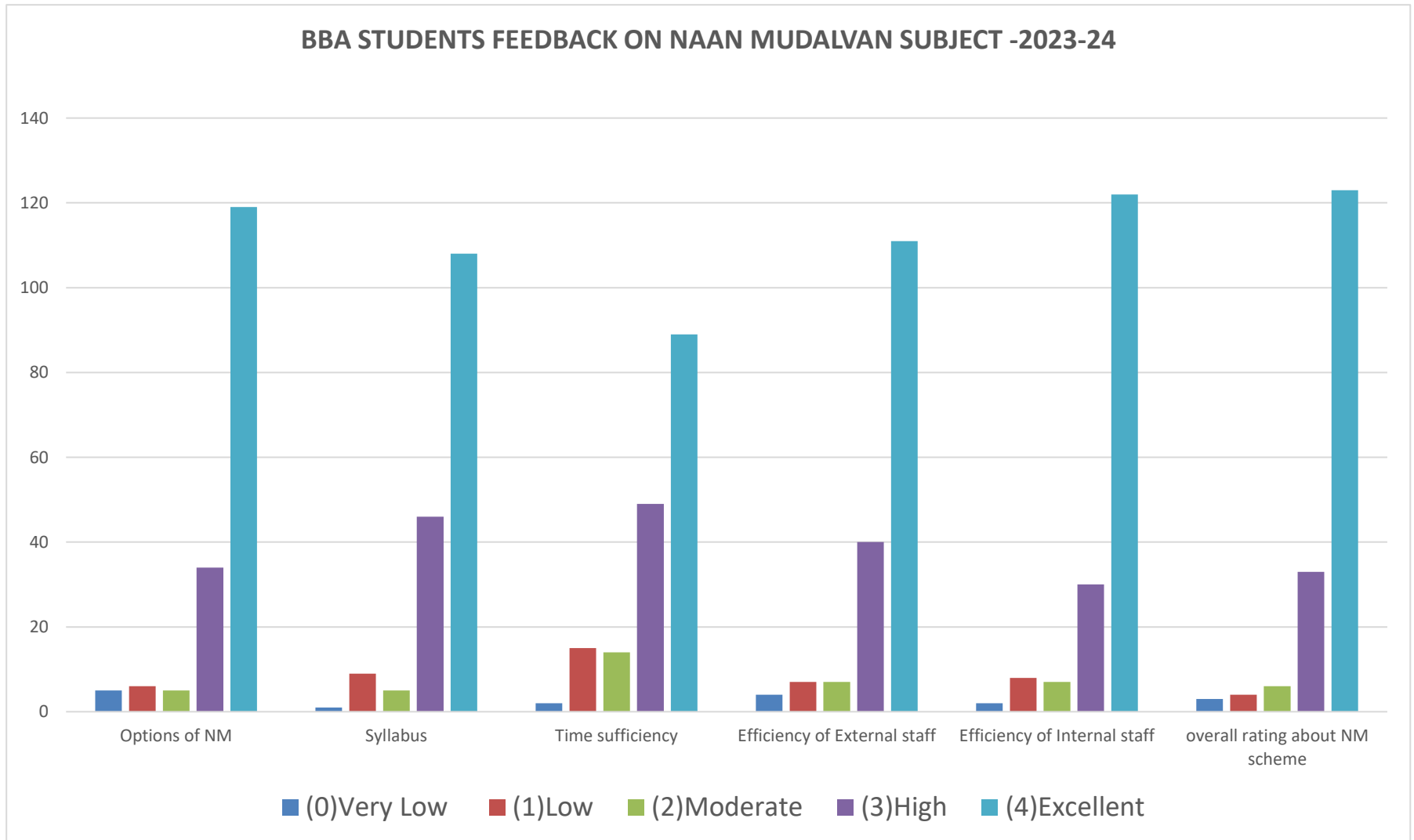
**KUNTHAVAI NAACCHIYAAR GOVERNMENT ARTS COLLEGE FOR WOMEN, THANJAVUR**  
**STUDENT SATISFACTION SURVEY REPORT 2023-24**  
**BBA RETAIL MANAGEMENT**

**BBA STUDENTS SATISFACTION SURVEY 2023-2024**





KUNTHAVAI NAACCHIYAAR GOVERNMENT ARTS COLLEGE FOR WOMEN, THANJAVUR  
STUDENT SATISFACTION SURVEY REPORT 2023-24  
BBA RETAIL MANAGEMENT







**KUNTHAVAI NAACCHIYAAR GOVERNMENT ARTS COLLEGE FOR WOMEN, THANJAVUR**  
**STUDENT SATISFACTION SURVEY REPORT 2023-24**  
**BBA RETAIL MANAGEMENT**

**Give three observation / suggestions to improve the overall teaching –**

**learning experience in your department. (Consolidation)**

1. Need wifi facility and projectors.
2. Try to reach every student and ask for their doubts
3. Smart class and procedures , We need extra staff in our department
4. Need good Auditorium
5. Use better graphics and visual media to engage students well.
6. Need practical class for computer subject

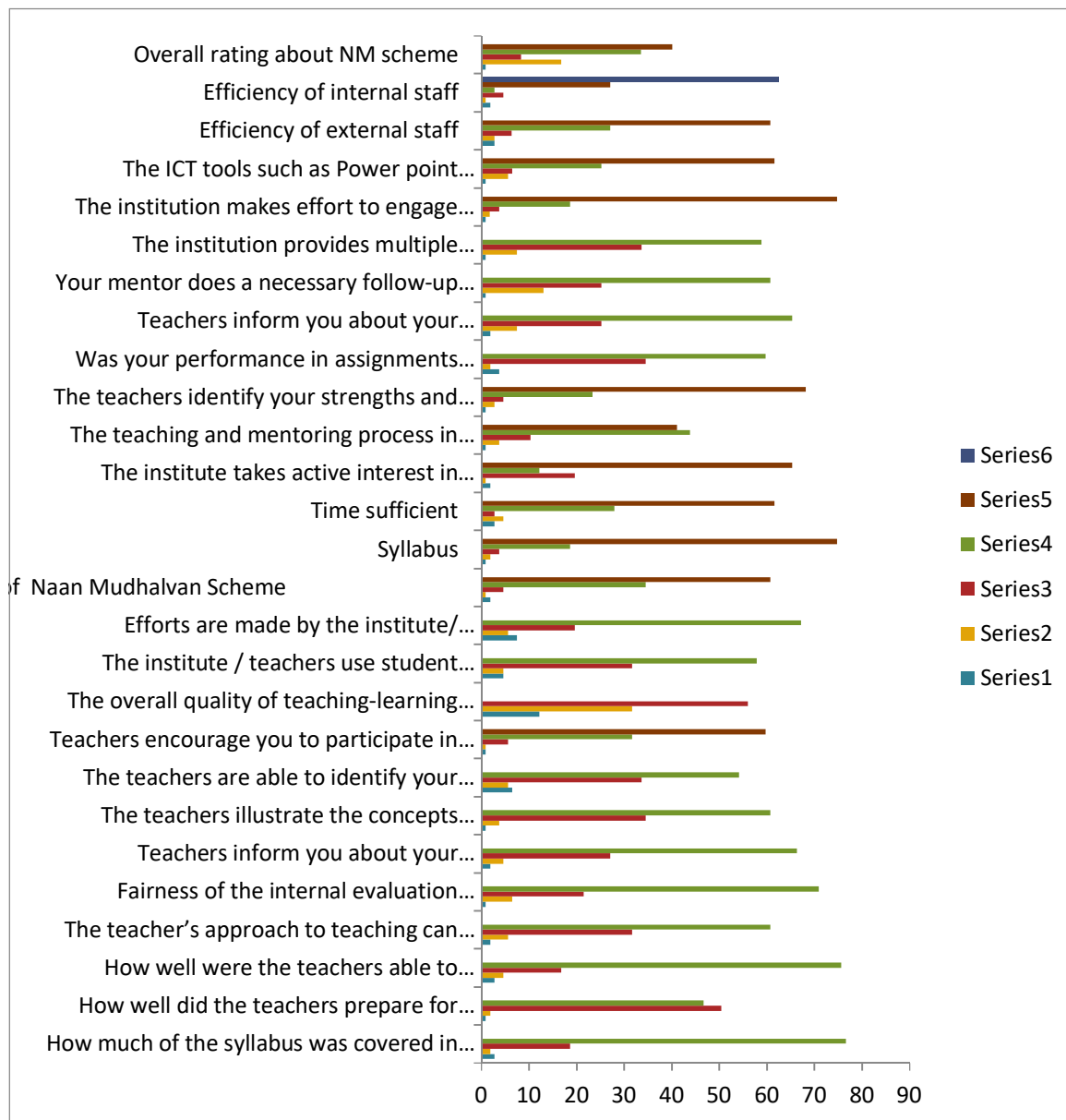
**Meeting convened In this connection and following decisions were made.**

1. To fix ICT facilities in all the class rooms.
2. Wifi facilities proposal sent and government wifi is provided for naan mudalvan classes
3. Classes arranged from CLP for practical's in computer oriented subjects..

*M. Kalpana*

**Signature of the HOD**

**DEPARTMENT OF CHEMISTRY**  
**STUDENTS SATISFACTION SURVEY: RESPONSES 2023-2024**



Response	Explanations
4	85 to 100% /Thoroughly/ Always effective/ Always fair/ Excellent/ Regularly/ Significantly/ Fully/ Every time/ Strongly agree/ To a great extent
3	70 to 84% /Satisfactorily/ Some times effective/ Usually fair/ Very good/ Often/ Very well/ Reasonably/ Usually/ Agree/ Moderate
2	55 to 69%/ Poorly/ just satisfactorily/ Some times unfair/ Good/ Sometimes / Moderately/ Partially/ Occationally sometimes/ Neutral/ Some what
1	30 to 54%/ Indifferently/ Generally ineffective/ Usually unfair/ Fair/ Rarely/ Moderately/ Slightly/ Disagree/ Very little
0	Below 30%/ Won't Teach at all/ Very poor communication/ Poor/ Never/ Unable to/ Not at all

S.No	Major Suggestions Made by Students
1	Permanent Classroom and Perfect Laboratory
2	ICT Enabled classes
3	Development in Multidisciplinary knowledge.
4	Awareness related to Employability, Higher Studies, Competitive Examinations,
5	Encouragement to Participation in Extra Curricular activities
6	Drinking water and Cleanliness
7	Skill Based Assignments, Seminars, Day to Day update.

S.No	Actions Taken
1	One new block with 12 Class rooms & 3 Laboratory is in usage and another New Block with sufficient class rooms and Laboratory facility is under construction.
2	Curriculum designing under progress for Board of Studies 2023-24 to incorporate ICT enabled classes and Internship / Field Visit enabled Curriculum Department wise actions have been taken and filed.
3	Add on course is implemented in 2023 – 2024 Curriculum design.
4	Current Updates and Applications in relevant fields is included in 2023 – 2024 Curriculum.
5	Seminars and Awareness Programmes were conducted by Career Guidance and Placement Cell.
6	Entrepreneur Development Centre is functioning with Food Court and Hand Made Crafts to make the Students as Small Scale Business Holders.
7	PWD works intensified for drinking, rest room and other infrastructure facilities

**KUNTHAVAI NAACCHIYAAR GOVERNMENT ARTS COLLEGE FOR WOMEN (AUTONOMOUS), THANJAVUR - 7**  
**POST GRADUATE AND RESEARCH DEPARTMENT OF COMMERCE**

STUDENTS SATISFACTORY SURVEY IN UG (B.COM) RESPONSES FOR 2024 - 2025 **Total No. of Respondents = 519**

S. No.	Questions	Option - 1	Option - 2	Option - 3	Option - 4	Option - 5	
1	Syllabus Coverage	0 - Below 30%	1- 30 to 54%	2 – 55 to 69%	3 – 70 to 84%	4 – 85 to 100%	Total
		3	10	30	149	327	519
		0.58	1.93	5.78	28.71	63.01	100
2	Teachers Preparation	0 – Won't teach at all	1 – Indifferently	2 – Poorly	3 – Satisfactorily	4 –Thoroughly	Total
		6	10	33	276	194	519
		1.16	1.93	6.36	53.18	37.38	100
3	Teachers ability to Communicate	0– Very poor communication	1– Generally ineffective	2 – Just satisfactorily	3 – Sometimes effective	4 – Always effective	Total
		6	20	51	120	322	519
		1.16	3.85	9.83	23.12	62.04	100
4	Teachers approaches in Offline / Online Classes	0 - Poor	1 – Fair	2 – Good	3 – Very good	4– Excellent	Total
		4	6	113	167	229	519
		0.77	1.16	21.77	32.18	44.12	100
5	Internal Evaluation by Teachers	0– Unfair	1 – Usually unfair	2 – Sometimes unfair	3 – Usually fair	4 – Always fair	Total
		5	15	47	154	298	519
		0.96	2.89	9.06	29.67	57.42	100

6	Interest of Institution in Internship / Field Visit	0– Never	1 – Rarely	2 – Sometimes	3 – Often	4 – Regularly	Total
		3	13	60	78	365	519
		0.58	2.50	11.56	15.03	70.33	100
7	Teaching and Mentoring Process facilitate Cognitive, Social.	0– Not at all	1 – Marginally	2 – Moderately	3 – Very well	4 – Significantly	Total
		5	19	49	203	243	519
		0.96	3.66	9.44	39.11	46.82	100
8	Identifying Slow Learners	0– Unable to	1 – Slightly	2 – Partially	3 – Reasonably	4 – Fully	Total
		8	21	42	129	319	519
		1.54	4.05	8.09	24.86	61.46	100
9	Discussion on Assignment Performance	Never(0)	Rarely(1)	Occasionally/ Sometimes(2)	Usually(3)	Every time(4)	Total
		6	19	44	148	302	519
		1.16	3.66	8.48	28.52	58.19	100
10	Information on Expected Course and Programme Outcomes	Never(0)	Rarely(1)	Occasionally/ Sometimes(2)	Usually(3)	Every time(4)	Total
		10	21	48	154	286	519
		1.93	4.05	9.25	29.67	55.11	100
11	Tutor Mentoring Students	Never(0)	Rarely(1)	Occasionally/ Sometimes(2)	Usually(3)	Every time(4)	Total
		19	31	62	148	259	519
		3.66	5.97	11.95	28.52	49.90	100

12	Illustration through Examples and applications	Never(0)	Rarely(1)	Occasionally/ Sometimes(2)	Usually(3)	Every time(4)	Total
		12	23	45	149	290	519
		2.31	4.43	8.67	28.71	55.88	100
13	Identifying Weakness and Overcome	Never(0)	Rarely(1)	Occasionally/ Sometimes(2)	Usually(3)	Every time(4)	Total
		11	26	45	171	266	519
		2.12	5.01	8.67	32.95	51.25	100
14	Opportunities to Learn and Grow	Strongly disagree(0)	Disagree(1)	Neutral(2)	Agree(3)	Strongly agree(4)	Total
		6	16	50	165	282	519
		1.16	3.08	9.63	31.79	54.34	100
15	Monitoring, review and continuous quality improvement	Strongly disagree(0)	Disagree(1)	Neutral(2)	Agree(3)	Strongly agree(4)	Total
		7	11	54	193	254	519
		1.35	2.12	10.40	37.19	48.94	100
16	Teachers encouragement to Participate in extra Curricular Activities	Strongly disagree(0)	Disagree(1)	Neutral(2)	Agree(3)	Strongly agree(4)	Total
		6	13	55	166	279	519
		1.16	2.50	10.60	31.98	53.76	100
17	Overall quality of teaching-learning process	Strongly disagree(0)	Disagree(1)	Neutral(2)	Agree(3)	Strongly agree(4)	Total
		10	11	55	190	253	519
		1.93	2.12	10.60	36.61	48.75	100

18	Student centric methods	Not at all(0)	Very little(1)	Somewhat(2)	Moderate(3)	To a great extent(4)	Total
		7	26	41	154	291	519
		1.35	5.01	7.90	29.67	56.07	100
19	Inculcate soft skills, life skills and employability skills	Not at all(0)	Very little(1)	Somewhat(2)	Moderate(3)	To a great extent(4)	Total
		7	26	37	129	320	519
		1.35	5.01	7.13	24.86	61.66	100
20	ICT tools	Not at all(0)	Very little(1)	Somewhat(2)	Moderate(3)	To a great extent(4)	Total
		20	35	45	147	272	519
		3.85	6.74	8.67	28.32	52.41	100

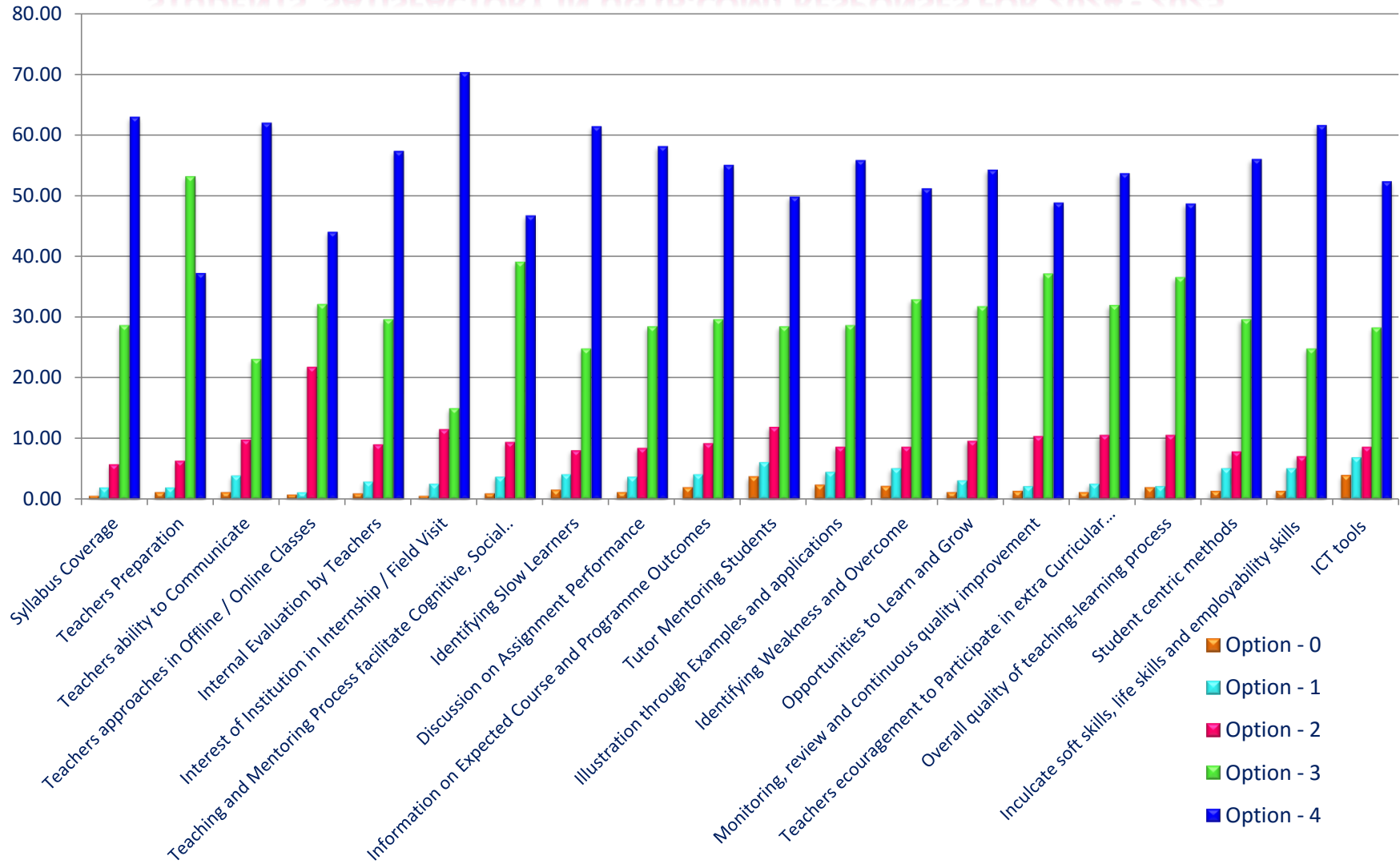
**STUDENTS SATISFACTORY SURVEY IN UG (B.COM) RESPONSES FOR 2024 - 2025**

S. No.	Questions	Option - 0	Option - 1	Option - 2	Option - 3	Option - 4
1	Syllabus Coverage	0.58	1.93	5.78	28.71	63.01
2	Teachers Preparation	1.16	1.93	6.36	53.18	37.38
3	Teachers ability to Communicate	1.16	3.85	9.83	23.12	62.04
4	Teachers approaches in Offline / Online Classes	0.77	1.16	21.77	32.18	44.12
5	Internal Evaluation by Teachers	0.96	2.89	9.06	29.67	57.42
6	Interest of Institution in Internship / Field Visit	0.58	2.50	11.56	15.03	70.33
7	Teaching and Mentoring Process facilitate Cognitive, Social..	0.96	3.66	9.44	39.11	46.82
8	Identifying Slow Learners	1.54	4.05	8.09	24.86	61.46
9	Discussion on Assignment Performance	1.16	3.66	8.48	28.52	58.19
10	Information on Expected Course and Programme Outcomes	1.93	4.05	9.25	29.67	55.11



<b>11</b>	<b>Tutor Mentoring Students</b>	<b>3.66</b>	<b>5.97</b>	<b>11.95</b>	<b>28.52</b>	<b>49.90</b>
<b>12</b>	<b>Illustration through Examples and applications</b>	<b>2.31</b>	<b>4.43</b>	<b>8.67</b>	<b>28.71</b>	<b>55.88</b>
<b>13</b>	<b>Identifying Weakness and Overcome</b>	<b>2.12</b>	<b>5.01</b>	<b>8.67</b>	<b>32.95</b>	<b>51.25</b>
<b>14</b>	<b>Opportunities to Learn and Grow</b>	<b>1.16</b>	<b>3.08</b>	<b>9.63</b>	<b>31.79</b>	<b>54.34</b>
<b>15</b>	<b>Monitoring, review and continuous quality improvement</b>	<b>1.35</b>	<b>2.12</b>	<b>10.40</b>	<b>37.19</b>	<b>48.94</b>
<b>16</b>	<b>Teachers encouragement to Participate in extra Curricular Activities</b>	<b>1.16</b>	<b>2.50</b>	<b>10.60</b>	<b>31.98</b>	<b>53.76</b>
<b>17</b>	<b>Overall quality of teaching-learning process</b>	<b>1.93</b>	<b>2.12</b>	<b>10.60</b>	<b>36.61</b>	<b>48.75</b>
<b>18</b>	<b>Student centric methods</b>	<b>1.35</b>	<b>5.01</b>	<b>7.90</b>	<b>29.67</b>	<b>56.07</b>
<b>19</b>	<b>Inculcate soft skills, life skills and employability skills</b>	<b>1.35</b>	<b>5.01</b>	<b>7.13</b>	<b>24.86</b>	<b>61.66</b>
<b>20</b>	<b>ICT tools</b>	<b>3.85</b>	<b>6.74</b>	<b>8.67</b>	<b>28.32</b>	<b>52.41</b>

## STUDENTS SATISFACTORY IN UG (B.COM) RESPONSES FOR 2024 - 2025



## Action Taken Report for UG B.Com 2024-2025

S. No.	Actions
1	Teacher's Communication & ability to communicate has been improved by various programs like FDP.
2	Steps have been taken to identify slow learners & special attention was provided
3	Assignment were discussed in class to make the students understand the necessity of it
4	Course & Programme outcomes were clearly explained to the students
5	Mentoring of students has been taken care of.
6	Weakness of students has been identified and application oriented methodology of teaching was adopted.
7	Internship helps the students to learn & grow.
8	Students were motivated to participate in extra curricular activities.
9	Overall quality of teaching & learning process has been enhanced through continuous monitoring of the quality.
10	Student centric method of teaching was adopted.
11	Soft Skills training & employability skills programs were conducted.
12	More use of ICT tools were emphasized.

**KUNTHAVAI NAACCHIYAAR GOVERNMENT ARTS COLLEGE FOR WOMEN (AUTONOMOUS), THANJAVUR - 7**  
**POST GRADUATE AND RESEARCH DEPARTMENT OF COMMERCE**

**STUDENTS SATISFACTORY SURVEY IN PG (M.COM) RESPONSES FOR 2024 - 2025 Total No. of Respondents = 69**

S. No.	Questions	Option - 1	Option - 2	Option - 3	Option - 4	Option - 5	
1	Syllabus Coverage	0 - Below 30%	1- 30 to 54%	2 – 55 to 69%	3 – 70 to 84%	4 – 85 to 100%	Total
		0	0	5	21	43	69
		0.00	0.00	7.25	30.43	62.32	100
2	Teachers Preparation	0 – Won't teach at all	1 – Indifferently	2 – Poorly	3 – Satisfactorily	4 –Thoroughly	Total
		0	2	1	49	17	69
		0	2.90	1.45	71.01	24.64	100
3	Teachers ability to Communicate	0– Very poor communication	1– Generally ineffective	2 – Just satisfactorily	3 – Sometimes effective	4 – Always effective	Total
		0	1	9	28	31	69
		0.00	1.45	13.04	40.58	44.93	100
4	Teachers approaches in Offline / Online Classes	0 - Unfair	1 – Fair	2 – Good	3 – Very good	4– Excellent	Total
		0	1	17	23	28	69
		0.00	1.45	24.64	33.33	40.58	100
5	Internal Evaluation by Teachers	0– Unfair	1 – Usually unfair	2 – Sometimes unfair	3 – Usually fair	4 – Always fair	Total
		0	2	6	32	29	69
		0.00	2.90	8.70	46.38	42.03	100

6	Interest of Institution in Internship / Field Visit	0– Never	1 – Rarely	2 – Sometimes	3 – Often	4 – Regularly	Total
		1	0	9	20	39	69
		3.00	0.00	13.04	28.99	56.52	100
7	Teaching and Mentoring Process facilitate Cognitive, Social..	0– Not at all	1 – Marginally	2 – Moderately	3 – Very well	4 – Significantly	Total
		0	1	15	29	24	69
		0.00	1.45	21.74	42.03	34.78	100
8	Identifying Slow Learners	0– Unable to	1 – Slightly	2 – Partially	3 – Reasonably	4 – Fully	Total
		0	1	10	26	32	69
		0.00	1.45	14.49	37.68	46.38	100
9	Discussion on Assignment Performance	Never(0)	Rarely(1)	Occasionally/ Sometimes(2)	Usually(3)	Every time(4)	Total
		0	1	8	26	34	69
		0.00	1.45	11.59	37.68	49.28	100
10	Information on Expected Course and Programme Outcomes	Never(0)	Rarely(1)	Occasionally/ Sometimes(2)	Usually(3)	Every time(4)	Total
		0	5	8	26	30	69
		0.00	7.25	11.59	37.68	43.48	100
11	Tutor Mentoring Students	Never(0)	Rarely(1)	Occasionally/ Sometimes(2)	Usually(3)	Every time(4)	Total
		0	2	5	28	34	69
		0.00	2.90	7.25	40.58	49.28	100

12	Illustration through Examples and applications	Never(0)	Rarely(1)	Occasionally/ Sometimes(2)	Usually(3)	Every time(4)	Total
		0	0	6	36	27	69
		0.00	0.00	8.70	52.17	39.13	100
13	Identifying Weakness and Overcome	Never(0)	Rarely(1)	Occasionally/ Sometimes(2)	Usually(3)	Every time(4)	Total
		0	0	6	36	27	69
		0.00	0.00	8.70	52.17	39.13	100
14	Opportunities to Learn and Grow	Strongly disagree(0)	Disagree(1)	Neutral(2)	Agree(3)	Strongly agree(4)	Total
		1	1	10	25	32	69
		1.45	1.45	14.49	36.23	46.38	100
15	Monitoring, review and continuous quality improvement	Strongly disagree(0)	Disagree(1)	Neutral(2)	Agree(3)	Strongly agree(4)	Total
		0	1	11	28	29	69
		0.00	1.45	15.94	40.58	42.03	100
16	Teachers encouragement to Participate in extra Curricular Activities	Strongly disagree(0)	Disagree(1)	Neutral(2)	Agree(3)	Strongly agree(4)	Total
		0	2	7	33	27	69
		0.00	2.90	10.14	47.83	39.13	100
17	Overall quality of teaching-learning process	Strongly disagree(0)	Disagree(1)	Neutral(2)	Agree(3)	Strongly agree(4)	Total
		0	1	7	37	24	69
		0.00	1.45	10.14	53.62	34.78	100

18	Student centric methods	Not at all(0)	Very little(1)	Somewhat(2)	Moderate(3)	To a great extent(4)	Total
		0	3	2	38	26	69
		0.00	4.35	2.90	55.07	37.68	100
19	Inculcate soft skills, life skills and employability skills	Not at all(0)	Very little(1)	Somewhat(2)	Moderate(3)	To a great extent(4)	Total
		0	0	1	34	34	69
		0.00	0.00	1.45	49.28	49.28	100
20	ICT tools	Not at all(0)	Very little(1)	Somewhat(2)	Moderate(3)	To a great extent(4)	Total
		0	1	8	30	30	69
		0.00	1.45	11.59	43.48	43.48	100

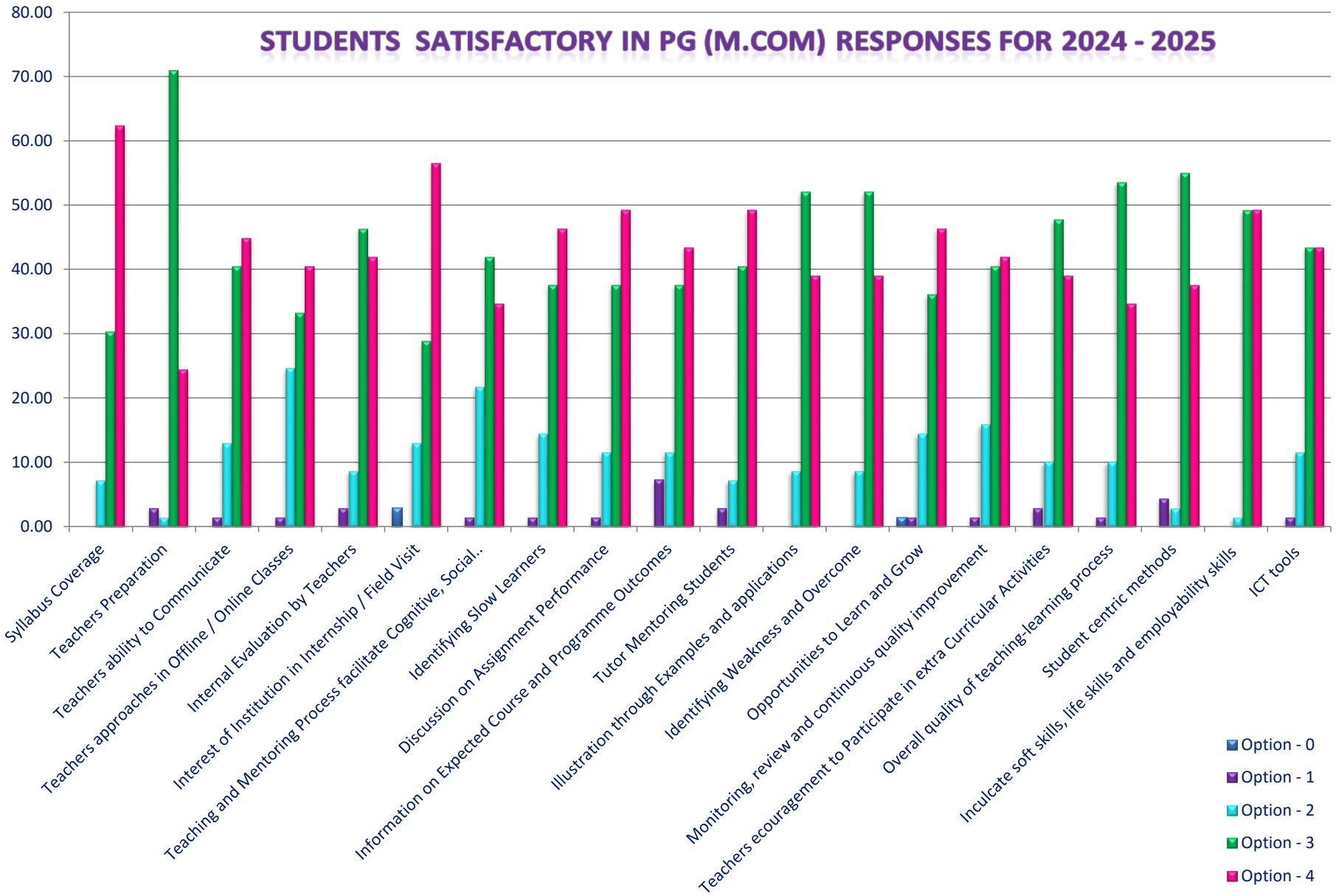
**STUDENTS SATISFACTORY SURVEY IN PG (M.COM) RESPONSES FOR 2024 - 2025**

S. No.	Questions	Option - 0	Option - 1	Option - 2	Option - 3	Option - 4
1	Syllabus Coverage	0.00	0.00	7.25	30.43	62.32
2	Teachers Preparation	0	2.90	1.45	71.01	24.64
3	Teachers ability to Communicate	0.00	1.45	13.04	40.58	44.93
4	Teachers approaches in Offline / Online Classes	0.00	1.45	24.64	33.33	40.58
5	Internal Evaluation by Teachers	0.00	2.90	8.70	46.38	42.03
6	Interest of Institution in Internship / Field Visit	3.00	0.00	13.04	28.99	56.52
7	Teaching and Mentoring Process facilitate Cognitive, Social..	0.00	1.45	21.74	42.03	34.78
8	Identifying Slow Learners	0.00	1.45	14.49	37.68	46.38
9	Discussion on Assignment Performance	0.00	1.45	11.59	37.68	49.28
10	Information on Expected Course and Programme Outcomes	0.00	7.25	11.59	37.68	43.48



<b>11</b>	<b>Tutor Mentoring Students</b>	<b>0.00</b>	<b>2.90</b>	<b>7.25</b>	<b>40.58</b>	<b>49.28</b>
<b>12</b>	<b>Illustration through Examples and applications</b>	<b>0.00</b>	<b>0.00</b>	<b>8.70</b>	<b>52.17</b>	<b>39.13</b>
<b>13</b>	<b>Identifying Weakness and Overcome</b>	<b>0.00</b>	<b>0.00</b>	<b>8.70</b>	<b>52.17</b>	<b>39.13</b>
<b>14</b>	<b>Opportunities to Learn and Grow</b>	<b>1.45</b>	<b>1.45</b>	<b>14.49</b>	<b>36.23</b>	<b>46.38</b>
<b>15</b>	<b>Monitoring, review and continuous quality improvement</b>	<b>0.00</b>	<b>1.45</b>	<b>15.94</b>	<b>40.58</b>	<b>42.03</b>
<b>16</b>	<b>Teachers encouragement to Participate in extra Curricular Activities</b>	<b>0.00</b>	<b>2.90</b>	<b>10.14</b>	<b>47.83</b>	<b>39.13</b>
<b>17</b>	<b>Overall quality of teaching-learning process</b>	<b>0.00</b>	<b>1.45</b>	<b>10.14</b>	<b>53.62</b>	<b>34.78</b>
<b>18</b>	<b>Student centric methods</b>	<b>0.00</b>	<b>4.35</b>	<b>2.90</b>	<b>55.07</b>	<b>37.68</b>
<b>19</b>	<b>Inculcate soft skills, life skills and employability skills</b>	<b>0.00</b>	<b>0.00</b>	<b>1.45</b>	<b>49.28</b>	<b>49.28</b>
<b>20</b>	<b>ICT tools</b>	<b>0.00</b>	<b>1.45</b>	<b>11.59</b>	<b>43.48</b>	<b>43.48</b>

## STUDENTS SATISFACTORY IN PG (M.COM) RESPONSES FOR 2024 - 2025



## Action Taken Report for PG M.Com 2024-2025

S. No.	Actions
1	Students were motivated to process a progressive report on their internship
2	Make opportunities were provided for students through assignments & Seminars.
3	Internal evaluation was centralized to have a proper marking system for students
4	Course & Programme outcomes were clearly explained.
5	Mentoring of students has been taken care of.
6	Students were motivated to participate in extra curricular activities.
7	Overall quality of teaching & learning process has been enhanced through continuous monitoring of the quality.
8	Student centric method of teaching was adopted.
9	More use of ICT tools were emphasized.

**Kunthavai Naacchiyaar Govt. Arts College for Women (Autonomous), Thanjavur**  
**Student Satisfaction Survey (Online) Report –**  
**Under Graduate - Computer Science**

**Academic Year 2023 – 2024: Total Respondents: 231**

S.No	Questions	Option (0)	Option (1)	Option (2)	Option(3)	Option(4)
1	How much of the syllabus was covered in the class?	0 –Below 30%	1– 30 to 54%	2 – 55 to 69%	3 – 70 to 84%	4 – 85 to 100%
		-	<b>0.3</b>	<b>1.4</b>	<b>13.4</b>	<b>84.8</b>
2	How well did the teachers prepare for the classes?	0 – Won't teach at all	1 – Indifferently	2 – Poorly	3 – Satisfactorily	4 –Thoroughly
		-	<b>1.3</b>	<b>0.69</b>	<b>48.3</b>	<b>49.6</b>
3	How well were the teachers able to communicate? (Online / Offline classes)	0– Very poor communication	1– Generally ineffective	2 – Just satisfactorily	3 – Sometimes effective	4 – Always effective
		<b>0.7</b>	<b>0.7</b>	<b>5.5</b>	<b>17.9</b>	<b>75.1</b>
4	The teacher's approach to teaching can best be described as (Online / Offline classes) :	0– Poor	1 – Fair	2 – Good	3 – Very good	4– Excellent
		-	-	<b>12.1</b>	<b>33.1</b>	<b>54.8</b>
5	Fairness of the internal evaluation process by the teachers.	0– Unfair	1 – Usually unfair	2 – Sometimes unfair	3 – Usually fair	4 – Always fair
		-	<b>0.7</b>	<b>3.8</b>	<b>31</b>	<b>64.5</b>
6	The institute takes active interest in promoting internship, student exchange, field visit opportunities for students.	0– Never	1 – Rarely	2 – Sometimes	3 – Often	4 – Regularly
		-	<b>2.0</b>	<b>3.4</b>	<b>24.8</b>	<b>69.6</b>
7	The teaching and mentoring process in your institution facilitates you in cognitive, social and emotional growth. (during online and blended mode classes)	0– Not at all	1 – Marginally	2 – Moderately	3 – Very well	4 – Significantly
		-	<b>1.0</b>	<b>3.4</b>	<b>25.5</b>	<b>70</b>
8	The teachers identify your strengths and encourage you with providing right level of challenges.	0– Unable to	1 – Slightly	2 – Partially	3 – Reasonably	4 – Fully
		<b>0.7</b>	<b>7.9</b>	<b>9.3</b>	<b>27.2</b>	<b>54.8</b>

S.No	Questions	Option (0)	Option (1)	Option (2)	Option(3)	Option(4)
9	Was your performance in assignments discussed with you?	Never	Rarely	Occasionally/ Sometimes	Usually	Every time
		-	0.3	4.1	30.3	65.2
10	Teachers inform you about your expected competencies, course outcomes and programme outcomes.	Never	Rarely	Occasionally/ Sometimes	Usually	Every time
		-	0.34	5.2	30.3	64.1
11	Your mentor does a necessary follow-up with an assigned task to you.	Never	Rarely	Occasionally/ Sometimes	Usually	Every time
		0.3	2.4	4.4	25.5	67.2
12	The teachers illustrate the concepts through examples and applications.	Never	Rarely	Occasionally/ Sometimes	Usually	Every time
		-	3.4	3.1	24.1	69.3
13	Teachers are able to identify your weaknesses and help you to overcome them.	Never	Rarely	Occasionally/ Sometimes	Usually	Every time
		-	0.3	1.0	14.8	74.8
14	The department provides multiple opportunities to learn and grow.	Strongly disagree	Disagree	Neutral	Agree	Strongly agree
		1.3	1.0	4.4	40.7	52.4
15	The department makes effort to engage students in the monitoring, review and continuous quality improvement of the teaching learning process.	Strongly disagree	Disagree	Neutral	Agree	Strongly agree
		0.3	1.7	6.2	25.2	66.5
16	Teachers encourage you to participate in extracurricular activities.	Strongly disagree	Disagree	Neutral	Agree	Strongly agree
		1.0	5.8	4.1	29	58.9
17	The overall quality of teaching-learning process in your department is very good.	Strongly disagree	Disagree	Neutral	Agree	Strongly agree
		1.0	3.4	5.8	25.5	63.4

S.No	Questions	Option (0)	Option (1)	Option (2)	Option(3)	Option(4)
18	The institute/ teachers use student centric methods, such as experiential learning, participative learning and problem solving methodologies for enhancing learning experiences.	Not at all	Very little	Somewhat	Moderate	To a great extent
		-	5.5	-	30.7	63.4
19	Efforts are made by the institute/ teachers to inculcate soft skills, life skills and employability skills to make you ready for the world of work.	Not at all	Very little	Somewhat	Moderate	To a great extent
		-	0.3	6.9	30.7	62.0
20	The ICT tools such as Power point presentations, Multimedia usage, google class rooms / online meeting apps. etc. used by our department teachers is.	Not at all	Very little	Somewhat	Moderate	To a great extent
		0.3	7.2	4.1	22.1	66.2

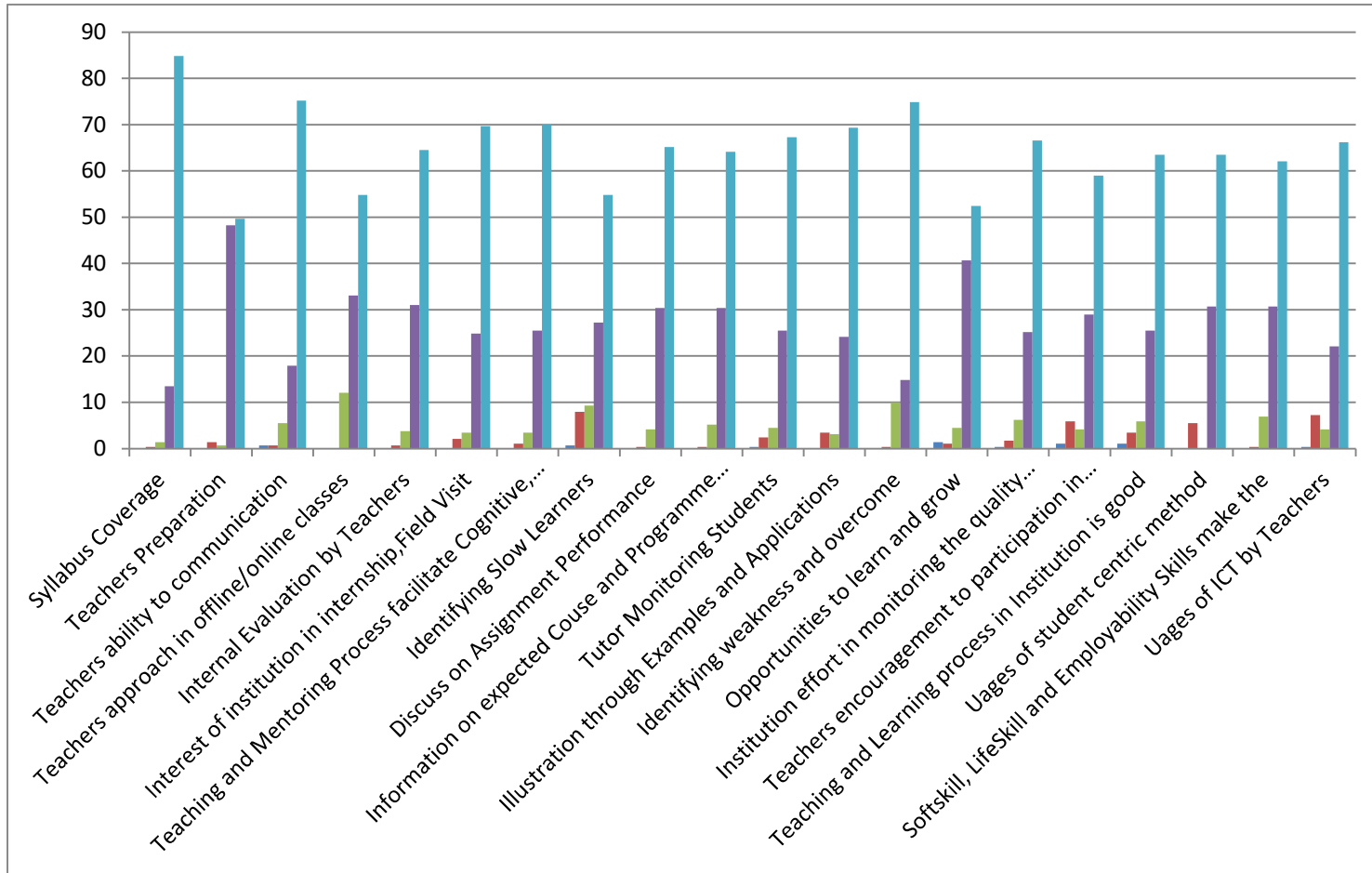
**Responses assessed by every department individually for appropriate action and reports filed. The overall assessment of the institution based on:**

The teaching and mentoring process in the institution is strengthened through Tutor ward System to improve Cognitive, Social and Emotional growth among students. (During online and blended mode classes). **(Question No.7)**

Teachers identify the Slow Learners and improve their quality with a better academic performance through the Internal Assessment Examinations. **(Question No.13)**

S.No	Major Suggestions Made by Students	Actions Taken
1	Permanent Classroom and Perfect Laboratory	One new block with 12 Class rooms& 3 Laboratory is in usage and another New Block with sufficient class rooms and Laboratory facility is under construction.
2	ICT Enabled classes	Curriculum designing under progress for Board of Studies 2022-23 to incorporate ICT enabled classes and Internship / Field Visit enabled Curriculum Department wise actions have been taken and filed.
3	Development in Multidisciplinary knowledge.	Add on course is implemented in 2022 – 2023 Curriculum design.
4	Skill Based Assignments, Seminars, Day to Day update.	Unit VI with Current Updates and Applications in relevant fields is included in 2022 – 2023 Curriculum.
5	Awareness related to Employability, Higher Studies, Competitive Examinations,	Seminars and Awareness Programmes were conducted by Career Guidance and Placement Cell.
6	Encouragement to Participation in Extra Curricular activities	<b>Entrepreneur Development Centre</b> is functioning with <b>Food Court and Hand Made Crafts</b> to make the Students as <b>Small Scale Business Holders.</b>
7	Drinking water and Cleanliness	PWD works intensified for drinking, rest room and other infrastructure facilities

## Students Satisfactory Survey - UG Responses for 2023 – 2024 Computer Science





**Kunthavai Naacchiyaar Govt. Arts College for Women (Autonomous), Thanjavur**  
**Student Satisfaction Survey (Online) Report - Post Graduate Computer Science**  
**Academic Year 2023 – 2024: Total Respondents: 59**

S.No	Questions	Option (0)	Option (1)	Option (2)	Option(3)	Option(4)
1	How much of the syllabus was covered in the class?	0 –Below 30%	1– 30 to 54%	2 – 55 to 69%	3 – 70 to 84%	4 – 85 to 100%
		-	-	11.8	88.1	-
2	How well did the teachers prepare for the classes?	0 – Won't teach at all	1 – Indifferently	2 – Poorly	3 – Satisfactorily	4 –Thoroughly
		1.6	-	52.5	45.7	-
3	How well were the teachers able to communicate? (Online / Offline classes)	0– Very poor communication	1– Generally ineffective	2 – Just satisfactorily	3 – Sometimes effective	4 – Always effective
		1.6	11.8	8.4	77.9	-
4	The teacher's approach to teaching can best be described as (Online / Offline classes) :	0– Poor	1 – Fair	2 – Good	3 – Very good	4– Excellent
		-	13.5	45.7	40.6	-
5	Fairness of the internal evaluation process by the teachers.	0– Unfair	1 – Usually unfair	2 – Sometimes unfair	3 – Usually fair	4 – Always fair
		-	13.5	32.2	54.2	-
6	The institute takes active interest in promoting internship, student exchange, field visit opportunities for students.	0– Never	1 – Rarely	2 – Sometimes	3 – Often	4 – Regularly
		1.6	27.1	-	-	71.1
7	The teaching and mentoring process in your institution facilitates you in cognitive, social and emotional growth. (during online and blended mode classes)	0– Not at all	1 – Marginally	2 – Moderately	3 – Very well	4 – Significantly
		-	-	-	38.9	61.0
8	The teachers identify your strengths and encourage you with providing right level of challenges.	0– Unable to	1 – Slightly	2 – Partially	3 – Reasonably	4 – Fully
		5.0	25.4	35.5	-	33.8

S.No	Questions	Option (0)	Option (1)	Option (2)	Option(3)	Option(4)
9	Was your performance in assignments discussed with you?	Never	Rarely	Occasionally/ Sometimes	Usually	Every time
		5.0	-	-	38.9	55.9
10	Teachers inform you about your expected competencies, course outcomes and programme outcomes.	Never	Rarely	Occasionally/ Sometimes	Usually	Every time
		-	-	10.1	32.2	57.6
11	Your mentor does a necessary follow-up with an assigned task to you.	Never	Rarely	Occasionally/ Sometimes	Usually	Every time
		6.7	6.7	35.5	-	50.8
12	The teachers illustrate the concepts through examples and applications.	Never	Rarely	Occasionally/ Sometimes	Usually	Every time
		3.3	13.5	28.8	-	54.2
13	Teachers are able to identify your weaknesses and help you to overcome them.	Never	Rarely	Occasionally/ Sometimes	Usually	Every time
		-	23.7	11.8	-	64.4
14	The department provides multiple opportunities to learn and grow.	Strongly disagree	Disagree	Neutral	Agree	Strongly agree
		3.2	6.7	54.2	-	35.5
15	The department makes effort to engage students in the monitoring, review and continuous quality improvement of the teaching learning process.	Strongly disagree	Disagree	Neutral	Agree	Strongly agree
		-	13.5	28.5	-	57.6
16	Teachers encourage you to participate in extracurricular activities.	Strongly disagree	Disagree	Neutral	Agree	Strongly agree
		1.6	3.4	5.1	40.6	47.5
17	The overall quality of teaching-learning process in your department is very good.	Strongly disagree	Disagree	Neutral	Agree	Strongly agree
		1.6	13.5	-	38.9	49.1

S.No	Questions	Option (0)	Option (1)	Option (2)	Option(3)	Option(4)
18	The institute/ teachers use student centric methods, such as experiential learning, participative learning and problem solving methodologies for enhancing learning experiences.	Not at all	Very little	Somewhat	Moderate	To a great extent
		-	-	<b>5.1</b>	<b>47.4</b>	<b>47.4</b>
19	Efforts are made by the institute/ teachers to inculcate soft skills, life skills and employability skills to make you ready for the world of work.	Not at all	Very little	Somewhat	Moderate	To a great extent
		-	-	<b>5.0</b>	<b>47.4</b>	<b>47.4</b>
20	The ICT tools such as Power point presentations, Multimedia usage, google class rooms / online meeting apps. etc. used by our department teachers is.	Not at all	Very little	Somewhat	Moderate	To a great extent
		-	-	<b>18.6</b>	<b>38.8</b>	<b>47.4</b>

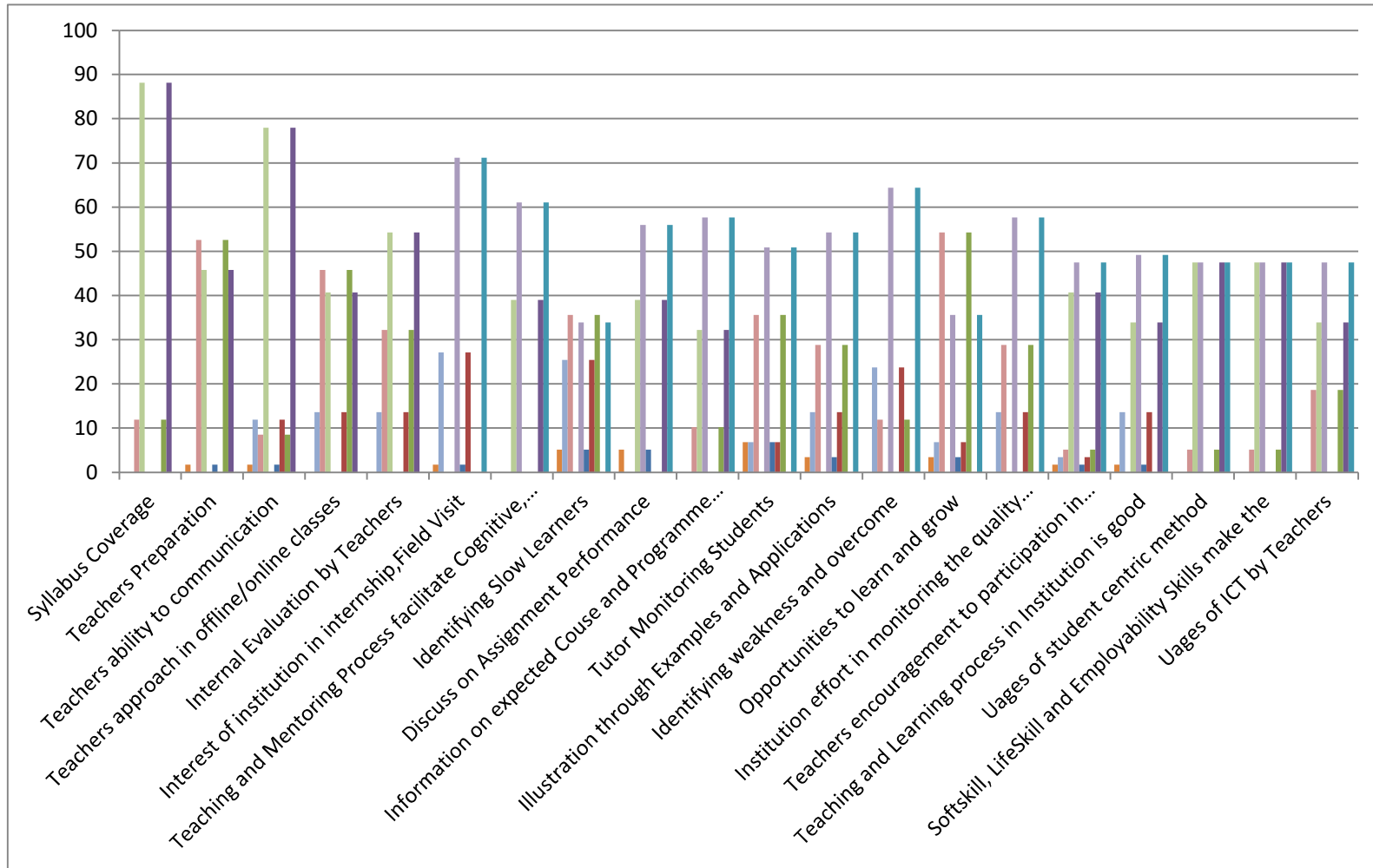
**Responses assessed by every department individually for appropriate action and reports filed. The overall assessment of the institution based on:**

The teaching and mentoring process in the institution is strengthened through Tutor ward System to improve Cognitive, Social and Emotional growth among students. (During online and blended mode classes). **(Question No.7)**

Teachers identify the Slow Learners and improve their quality with a better academic performance through the Internal Assessment Examinations. **(Question No.13)**

S.No	Major Suggestions Made by Students	Actions Taken
1	Permanent Classroom and Perfect Laboratory	One new block with 12 Class rooms& 3 Laboratory is in usage and another New Block with sufficient class rooms and Laboratory facility is under construction.
2	ICT Enabled classes	Curriculum designing under progress for Board of Studies 2022-23 to incorporate ICT enabled classes and Internship / Field Visit enabled Curriculum Department wise actions have been taken and filed.
3	Development in Multidisciplinary knowledge.	Add on course is implemented in 2023 – 2024 Curriculum design.
4	Skill Based Assignments, Seminars, Day to Day update.	Unit VI with Current Updates and Applications in relevant fields is included in 2023 – 2024 Curriculum.
5	Awareness related to Employability, Higher Studies, Competitive Examinations,	Seminars and Awareness Programmes were conducted by Career Guidance and Placement Cell.
6	Encouragement to Participation in Extra Curricular activities	<b>Entrepreneur Development Centre</b> is functioning with <b>Food Court and Hand Made Crafts</b> to make the Students as <b>Small Scale Business Holders.</b>
7	Drinking water and Cleanliness	PWD works intensified for drinking, rest room and other infrastructure facilities

## Students Satisfactory Survey - PG Responses for 2023 – 2024 Computer Science



Very Low	Low	Moderate	High	Excellent
----------	-----	----------	------	-----------

**KUNTHAVAI NAACCHIYAAR GOVERNMENT ARTS COLLEGE  
FOR WOMEN (AUTONOMOUS) THANJAVUR - 613007.**

**NAAC Reaccredited with B Grade**

**DEPARTMENT OF ECONOMICS**

**ACADAMIC YEAR 2023-2024**

**STUDENTS SATISFACTION SURVEY (ONLINE) Report**

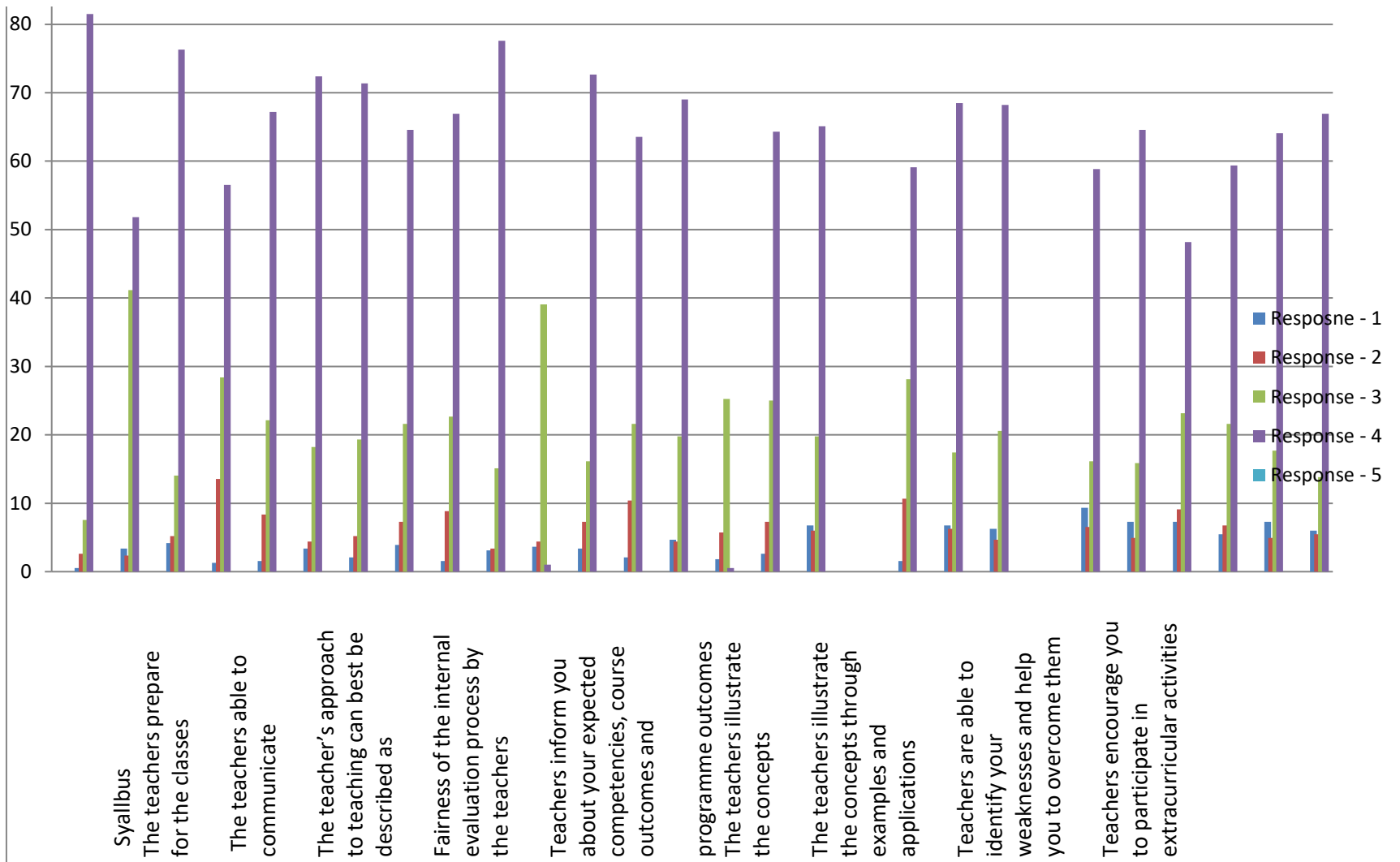
S.No	Questions	Resposne - 0	Resposne - 1	Response - 2	Response - 3	Response - 4
1	How much of the syllabus was covered in the class	Below 30	30 to 54	55 to 69	70 to 84	85-90
		0	0.52	2.6	7.55	81.51
2	How well did the teachers prepare for the classes		1 - Indifferently	2. Poorly	3. Satisfactorily	4. Throughy
		1.3	3.38	2.34	41.14	51.82
3	How well were the teachers able to communicate		Generally ineffective	Just Satisfactorily	some times effective	Always Effective
		0.26	4.16	5.2	14.06	76.3
4	The teacher's approach to teaching can best be described as		Fair	Good	Verygood	Excellent
		0.26	1.3	13.54	28.38	56.51
5	Fairness of the internal evaluation process by the teachers		Usually unfair	Sometimes Unfair	Usually fair	Always fair
		0.78	1.56	8.35	22.13	67.18

6	Teachers inform you about your expected competencies, course outcomes and programme outcomes	Never	Rarely	asionally/Someti	Usually	Every time
		1.56	3.38	4.42	18.22	72.39
7	The teachers illustrate the concepts through examples and applications	Never	Rarely	asionally/Someti	Usually	Every time
		1.82	2.08	5.2	19.33	71.35
8	Teachers are able to identify your weaknesses and help you to overcome them	Never	Rarely	asionally/Someti	Usually	Every time
		2.6	3.9	7.29	21.61	64.58
9	Teachers encourage you to participate in extracurricular activities	trongly Disagre	Disagree	Nutral	Agree	Strongly Agree
		0	1.56	8.85	22.65	66.92
10	The overall quality of teaching-learning process in your institute is very good	Never	Rarely	Sometimes	Often	Regularly
		0.78	3.12	3.38	15.1	77.6
11	The institute/ teachers use student centric methods, such as experiential learning, participative learning and	Never	Rarely	Occasionally/So metimes	Usually	Every time
		0.78	3.64	4.42	39.06	1.04
12	Efforts are made by the institute/ teachers to inculcate soft skills, life skills and employability skills to make	Never	Rarely	Occasionally/So metimes	Usually	Every time
		0.52	3.38	7.29	16.14	72.65
13	The institute takes active interest in promoting internship, student exchange, field visit opportunities for	Never	Rarely	Occasionally/So metimes	Usually	Every time
		2.34	2.08	10.41	21.61	63.54
14	The teaching and mentoring process in your institution facilitates you in cognitive, social and emotional growth.	Never	Rarely	Occasionally/So metimes	Usually	Every time
		2.08	4.68	4.42	19.79	69.01

15	The teachers identify your strengths and encourage you with providing right level of challenges	trongly Disagre	Disagree	Nutrial	Agree	Strongly Agree
			1.82	5.72	25.26	0.52
16	Was your performance in assignments discussed with you	trongly Disagre	Disagree	Nutrial	Agree	Strongly Agree
		0.78	2.6	7.29	25	64.32
17	Your mentor does a necessary follow-up with an assigned task to you	Not at all	Very Little	Somewhat	Moderate	To a Great Extent
		2.34	6.77	5.98	19.79	65.1
18	The institution provides multiple opportunities to learn and grow	Not at all	Very Little	Somewhat	Moderate	To a Great Extent
19	The institution makes effort to engage students in the monitoring, review and continuous quality	trongly Disagre	Disagree	Nutrial	Agree	Strongly Agree
		0.52	1.56	10.67	28.12	59.11
20	The ICT tools such as Power point presentations, Multimedia usage, google class rooms / online meeting apps.	Not at all	Very Little	Somewhat	Moderate	To a Great Extent
		1.04	6.77	6.25	17.44	68.48
21	Give three observation / suggestions to improve the overall teaching – learning experience in your institution	Not at all	Very Little	Somewhat	Moderate	To a Great Extent
		0.26	6.25	4.68	20.57	68.22
22	Courses completed Under Naan Mudhalvan Scheme (Semester and Title)	Not at all	Very Little	Somewhat	Moderate	To a Great Extent
23	Options of NM	Not at all	Very Little	Somewhat	Moderate	To a Great Extent
		8.59	9.35	6.51	16.14	58.85



24	Syllabus	Not at all	Very Little	Somewhat	Moderate	To a Great Extent
		4.68	7.29	4.94	15.88	64.58
25	Time sufficiency	Not at all	Very Little	Somewhat	Moderate	To a Great Extent
		6.51	7.29	9.11	23.17	48.17
26	Efficiency of External staff	Not at all	Very Little	Somewhat	Moderate	To a Great Extent
		6.25	5.46	6.77	21.61	59.37
27	Efficiency of Internal staff	Not at all	Very Little	Somewhat	Moderate	To a Great Extent
		5.2	7.29	4.94	17.7	64.06
28	overall rating about NM scheme	Not at all	Very Little	Somewhat	Moderate	To a Great Extent
		6.77	5.98	5.46	13.8	66.92



S.No	Major Suggestion Made by Students	Action Taken
1	How much of the syllabus was covered in the class	In order to cover the syllabus extra classes were taken.
2	How well did the teachers prepare for the	All the teachers were encouraged to prepare the lesson plan and accordingly classes

2	classes	were taken.
3	How well were the teachers able to communicate	Good Enough
4	The teacher's approach to teaching can best be described as	Teacher's approach was improved as per the need of the students.
5	Fairness of the internal evaluation process by the teachers	The internal evaluation process was made fair enough and student got the justice.
6	Teachers inform you about your expected competencies, course outcomes and	The teachers have been were given instruction to provide course outcomes and programme outcomes as well as Employment Opportunity to the student
7	The teachers illustrate the concepts through examples and applications	The teachers were encouraged to prepare the lesson plan with the help of illustrated examples as every day world economy and Indian Economy so the slow Lerner could
8	Teachers are able to identify your weaknesses and help you to overcome them	the weakness are reduced through remedial classes.
9	Teachers encourage you to participate in extracurricular activities	All the teachers were instructed to take active parts in the extracurricular activities in the campus and accordingly some teachers took the initiatives.
11	The institute/ teachers use student centric methods, such as experiential learning,	participative learning and problem solving methodologies were used by the Teachers
15	The teachers identify your strengths and encourage you with providing right level of	Always encourage the students to overcome their challenges
20	The ICT tools such as Power point presentations, Multimedia usage, google class	Power point presentations for the class subject were done by the teachers

**Kunthavai Naacchiyaar Govt.Arts College for Women (Autonomous), Thanjavur**  
**Student Satisfaction Survey (Online) Report –Department of English-PG**  
**Academic Year 2023-2024: Total Respondents: 22**

S.No	Questions	Option (0)	Option (1)	Option (2)	Option(3)	Option(4)
1	How much of the syllabus was covered in the class?	0 –Below 30%	1– 30 to 54%	2 – 55 to 69%	3 – 70 to 84%	4 – 85 to 100%
		<b>Nil</b>	<b>Nil</b>	<b>Nil</b>	<b>10</b>	<b>90</b>
2	How well did the teachers prepare for the classes?	0 – Won't teach at all	1 – Indifferently	2 – Poorly	3 – Satisfactorily	4 –Thoroughly
		<b>Nil</b>	<b>Nil</b>	<b>Nil</b>	<b>85</b>	<b>15</b>
3	How well were the teachers able to communicate? (Online / Offline classes)	0– Very poor communication	1– Generally ineffective	2 – Just satisfactorily	3 – Sometimes effective	4 – Always effective
		<b>Nil</b>	<b>Nil</b>	<b>Nil</b>	<b>22</b>	<b>78</b>
4	The teacher's approach to teaching can best be described as (Online / Offline classes) :	0– Poor	1 – Fair	2 – Good	3 – Very good	4 – Excellent
		<b>Nil</b>	<b>Nil</b>	<b>Nil</b>	<b>90</b>	<b>10</b>
5	Fairness of the internal evaluation process by the teachers.	0– Unfair	1 – Usually unfair	2 – Sometimes unfair	3 – Usually fair	4 – Always fair
		<b>Nil</b>	<b>Nil</b>	<b>5</b>	<b>20</b>	<b>75</b>
6	The institute takes active interest in promoting internship, student exchange, field visit opportunities for students.	0– Never	1 – Rarely	2 – Sometimes	3 – Often	4 – Regularly
		<b>Nil</b>	<b>Nil</b>	<b>Nil</b>	<b>30</b>	<b>70</b>
7	The teaching and mentoring process in your institution facilitates you in cognitive, social and emotional growth. (during online and blended mode classes)	0– Not at all	1 – Marginally	2 – Moderately	3 – Very well	4 – Significantly
		<b>Nil</b>	<b>Nil</b>	<b>Nil</b>	<b>90</b>	<b>10</b>
8	The teachers identify your strengths and encourage you with providing right level of challenges.	0– Unable to	1 – Slightly	2 – Partially	3 – Reasonably	4 – Fully
		<b>Nil</b>	<b>Nil</b>	<b>Nil</b>	<b>80</b>	<b>20</b>

S.No	Questions	Option (0)	Option (1)	Option (2)	Option(3)	Option(4)
9	Was your performance in assignments discussed with you?	Never	Rarely	Occasionally/ Sometimes	Usually	Every time
		<b>Nil</b>	<b>Nil</b>	<b>Nil</b>	<b>20</b>	<b>80</b>
10	Teachers inform you about your expected competencies, course outcomes and programme outcomes.	Never	Rarely	Occasionally/ Sometimes	Usually	Every time
		<b>Nil</b>	<b>Nil</b>	<b>Nil</b>	<b>80</b>	<b>20</b>
11	Your mentor does a necessary follow-up with an assigned task to you.	Never	Rarely	Occasionally/ Sometimes	Usually	Every time
		<b>Nil</b>	<b>Nil</b>	<b>Nil</b>	<b>10</b>	<b>90</b>
12	The teachers illustrate the concepts through examples and applications.	Never	Rarely	Occasionally/ Sometimes	Usually	Every time
		<b>10</b>	<b>Nil</b>	<b>Nil</b>	<b>20</b>	<b>70</b>
13	Teachers are able to identify your weaknesses and help you to overcome them.	Never	Rarely	Occasionally/ Sometimes	Usually	Every time
		<b>Nil</b>	<b>Nil</b>	<b>10</b>	<b>70</b>	<b>20</b>
14	The department provides multiple opportunities to learn and grow.	Strongly disagree	Disagree	Neutral	Agree	Strongly agree
		<b>Nil</b>	<b>Nil</b>	<b>10</b>	<b>20</b>	<b>70</b>
15	The department makes effort to engage students in the monitoring, review and continuous quality improvement of the teaching learning process.	Strongly disagree	Disagree	Neutral	Agree	Strongly agree
		<b>Nil</b>	<b>Nil</b>	<b>Nil</b>	<b>20</b>	<b>80</b>
16	Teachers encourage you to participate in extracurricular activities.	Strongly disagree	Disagree	Neutral	Agree	Strongly agree
		<b>Nil</b>	<b>Nil</b>	<b>Nil</b>	<b>10</b>	<b>90</b>
17	The overall quality of teaching-learning process in your department is very good.	Strongly disagree	Disagree	Neutral	Agree	Strongly agree
		<b>Nil</b>	<b>Nil</b>	<b>Nil</b>	<b>10</b>	<b>90</b>

S.No	Questions	Option (0)	Option (1)	Option (2)	Option(3)	Option(4)
18	The institute/ teachers use student centric methods, such as experiential learning, participative learning and problem solving methodologies for enhancing learning experiences.	Not at all	Very little	Somewhat	Moderate	To a great extent
		<b>Nil</b>	<b>Nil</b>	<b>Nil</b>	<b>20</b>	<b>80</b>
19	Efforts are made by the institute/ teachers to inculcate soft skills, life skills and employability skills to make you ready for the world of work.	Not at all	Very little	Somewhat	Moderate	To a great extent
		<b>Nil</b>	<b>Nil</b>	<b>Nil</b>	<b>30</b>	<b>70</b>
20	The ICT tools such as Power point presentations, Multimedia usage, google class rooms / online meeting apps. etc. used by our department teachers is.	Not at all	Very little	Somewhat	Moderate	To a great extent
		<b>Nil</b>	<b>Nil</b>	<b>Nil</b>	<b>40</b>	<b>60</b>

### Three suggestions

- 1.Paucity of faculty members to be filled.
- 2.Maximise usage of ICT in teaching.
- 3.Students access to e resources to be implemented.

### Initiatives undertaken in the Department

2. Study materials circulated.
3. Oral class tests conducted.
- 4.Remedial teaching for the slow learners.

**Kunthavai Naacchiyaar Govt.Arts College for Women (Autonomous), Thanjavur**  
**Student Satisfaction Survey (Online) Report –Department of English-UG**  
**Academic Year 2023-2024: Total Respondents: 82**

S.No	Questions	Option (0)	Option (1)	Option (2)	Option(3)	Option(4)
1	How much of the syllabus was covered in the class?	0 –Below 30%	1– 30 to 54%	2 – 55 to 69%	3 – 70 to 84%	4 – 85 to 100%
		<b>Nil</b>	<b>Nil</b>	<b>Nil</b>	<b>24</b>	<b>76</b>
2	How well did the teachers prepare for the classes?	0 – Won't teach at all	1 – Indifferently	2 – Poorly	3 – Satisfactorily	4 –Thoroughly
		<b>Nil</b>	<b>Nil</b>	<b>Nil</b>	<b>70</b>	<b>30</b>
3	How well were the teachers able to communicate? (Online / Offline classes)	0– Very poor communication	1– Generally ineffective	2 – Just satisfactorily	3 – Sometimes effective	4 – Always effective
		<b>1.1</b>	<b>Nil</b>	<b>15.4</b>	<b>27.9</b>	<b>54.6</b>
4	The teacher's approach to teaching can best be described as (Online / Offline classes) :	0– Poor	1 – Fair	2 – Good	3 – Very good	4 – Excellent
		<b>Nil</b>	<b>3.4</b>	<b>25.5</b>	<b>31.3</b>	<b>39.5</b>
5	Fairness of the internal evaluation process by the teachers.	0– Unfair	1 – Usually unfair	2 – Sometimes unfair	3 – Usually fair	4 – Always fair
		<b>1.1</b>	<b>4.6</b>	<b>9.3</b>	<b>33.7</b>	<b>51.1</b>
6	The institute takes active interest in promoting internship, student exchange, field visit opportunities for students.	0– Never	1 – Rarely	2 – Sometimes	3 – Often	4 – Regularly
		<b>1.1</b>	<b>3.4</b>	<b>17.4</b>	<b>23.2</b>	<b>54.6</b>
7	The teaching and mentoring process in your institution facilitates you in cognitive, social and emotional growth. (during online and blended mode classes)	0– Not at all	1 – Marginally	2 – Moderately	3 – Very well	4 – Significantly
		<b>Nil</b>	<b>3.4</b>	<b>17.4</b>	<b>41.8</b>	<b>37.2</b>
8	The teachers identify your strengths and encourage you with providing right level of challenges.	0– Unable to	1 – Slightly	2 – Partially	3 – Reasonably	4 – Fully
		<b>2.3</b>	<b>5.8</b>	<b>6.9</b>	<b>37.2</b>	<b>47.6</b>

S.No	Questions	Option (0)	Option (1)	Option (2)	Option(3)	Option(4)
9	Was your performance in assignments discussed with you?	Never	Rarely	Occasionally/ Sometimes	Usually	Every time
		<b>5.88</b>	<b>3.4</b>	<b>13.9</b>	<b>20.9</b>	<b>53.4</b>
10	Teachers inform you about your expected competencies, course outcomes and programme outcomes.	Never	Rarely	Occasionally/ Sometimes	Usually	Every time
		<b>5.8</b>	<b>4.6</b>	<b>12.7</b>	<b>38.3</b>	<b>38.3</b>
11	Your mentor does a necessary follow-up with an assigned task to you.	Never	Rarely	Occasionally/ Sometimes	Usually	Every time
		<b>3.4</b>	<b>6.9</b>	<b>10.4</b>	<b>23.2</b>	<b>55.8</b>
12	The teachers illustrate the concepts through examples and applications.	Never	Rarely	Occasionally/ Sometimes	Usually	Every time
		<b>4.6</b>	<b>5.8</b>	<b>9.3</b>	<b>32.4</b>	<b>47.6</b>
13	Teachers are able to identify your weaknesses and help you to overcome them.	Never	Rarely	Occasionally/ Sometimes	Usually	Every time
		<b>6.9</b>	<b>2.3</b>	<b>10.4</b>	<b>30.2</b>	<b>50</b>
14	The department provides multiple opportunities to learn and grow.	Strongly disagree	Disagree	Neutral	Agree	Strongly agree
		<b>1.1</b>	<b>3.4</b>	<b>6.9</b>	<b>34.8</b>	<b>53.4</b>
15	The department makes effort to engage students in the monitoring, review and continuous quality improvement of the teaching learning process.	Strongly disagree	Disagree	Neutral	Agree	Strongly agree
		<b>2.3</b>	<b>3.5</b>	<b>10.4</b>	<b>36</b>	<b>47.6</b>
16	Teachers encourage you to participate in extracurricular activities.	Strongly disagree	Disagree	Neutral	Agree	Strongly agree
		<b>4.6</b>	<b>3.4</b>	<b>11.6</b>	<b>27.9</b>	<b>52.3</b>
17	The overall quality of teaching-learning process in your department is very good.	Strongly disagree	Disagree	Neutral	Agree	Strongly agree
		<b>46.5</b>	<b>36</b>	<b>11.6</b>	<b>1.1</b>	<b>4.65</b>



S.No	Questions	Option (0)	Option (1)	Option (2)	Option(3)	Option(4)
18	The institute/ teachers use student centric methods, such as experiential learning, participative learning and problem solving methodologies for enhancing learning experiences.	Not at all	Very little	Somewhat	Moderate	To a great extent
		<b>1.16</b>	<b>6.97</b>	<b>5.81</b>	<b>24.41</b>	<b>56.97</b>
19	Efforts are made by the institute/ teachers to inculcate soft skills, life skills and employability skills to make you ready for the world of work.	Not at all	Very little	Somewhat	Moderate	To a great extent
		<b>2.32</b>	<b>8.13</b>	<b>6.97</b>	<b>31.3</b>	<b>51.1</b>
20	The ICT tools such as Power point presentations, Multimedia usage, Google class rooms / online meeting apps. etc. used by our department teachers is.	Not at all	Very little	Somewhat	Moderate	To a great extent
		<b>6.97</b>	<b>3.4</b>	<b>6.9</b>	<b>30.2</b>	<b>52</b>

### Three suggestions

- 1.Paucity of faculty members to be filled.
- 2.Maximise usage of ICT in teaching.
- 3.Students access to e resources to be implemented.

### Initiatives undertaken in the Department

- 1.Soft Skill classes conducted
2. Study materials circulated.
3. Oral class tests conducted.
- 4.Remedial teaching for the slow learners



KUNTHAVAI NAACCHIYAAR GOVERNMENT ARTS COLLEGE FOR WOMEN, AUTONOMOUS, THANJAVUR – 7  
DEPARTMENT OF GEOGRAPHY

STUDENT SATISFACTION SURVEY REPORT 2023- 24

PG GEOGRAPHY

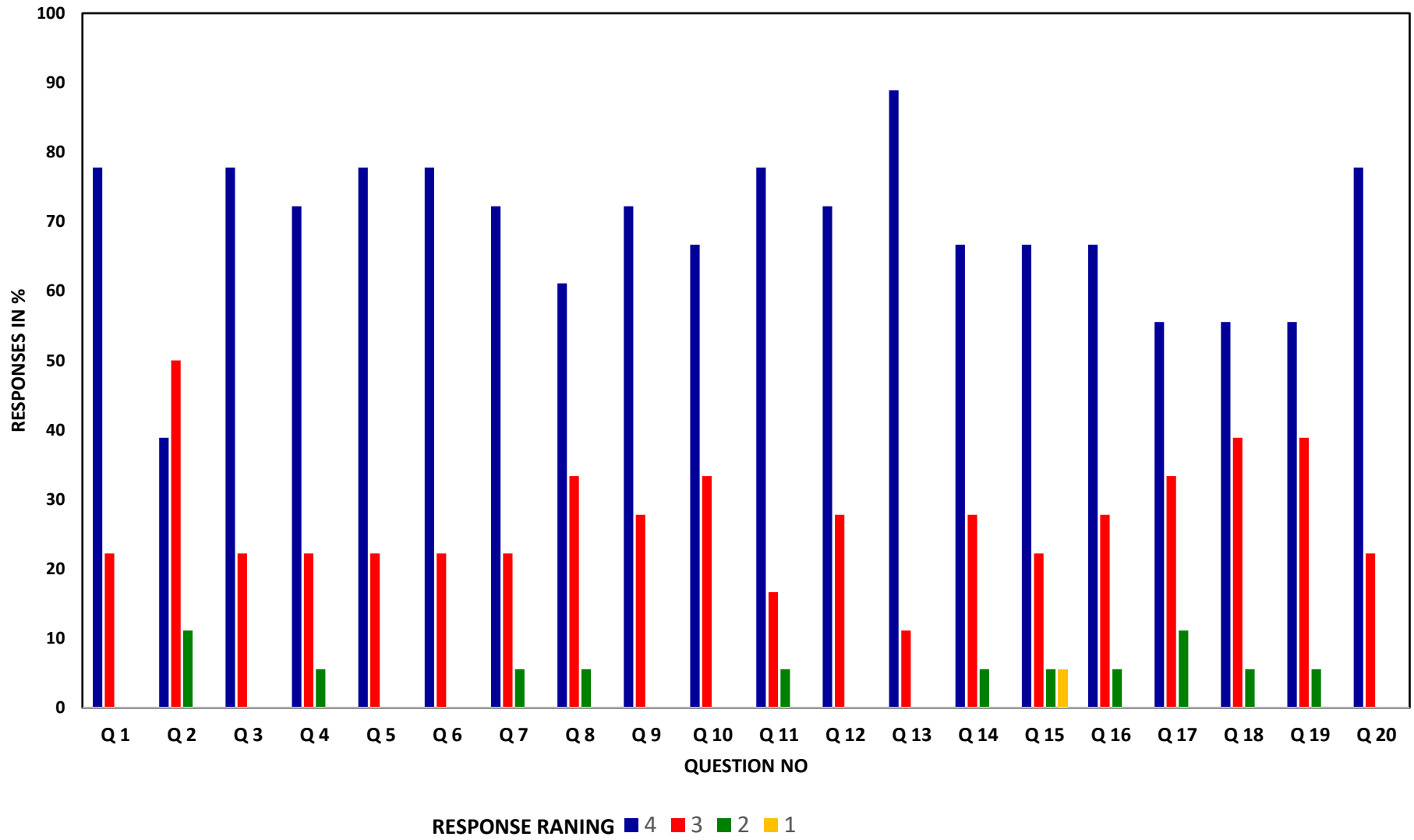
S No	QUESTION NO	QUESTIONS	RESPONSES RANK/ %									
			4	%	3	%	2	%	1	%	0	%
1	Q 1	How much of the syllabus was covered in the class? தங்கள் வகுப்பில் எவ்வளவு பாடத்திட்டம் நிறைவு செய்யப்பட்டுள்ளது?	14	78	4	22	0	0	0	0	0	0
2	Q 2	How well did the teachers prepare for the classes? வகுப்புக்கு வரும் ஆசிரியர்களின் பாடத்தயாரிப்பு எவ்வாறு அமைந்துள்ளது?	7	39	9	50	2	11	0	0	0	0
3	Q 3	How well were the teachers able to communicate? (Online / Offline classes)ஆசிரியர்களின் தொடர்பு திறன் எவ்வாறு அமைந்திருந்தது? (இணையவழி மற்றும் நேரடி வகுப்புகள்)	14	78	4	22	0	0	0	0	0	0
4	Q 4	The teacher's approach to teaching can best be described as (Online / Offline classes) : ஆசிரியர்களின் சிறப்பாகப் பாடம் கற்பித்தலில் அணுகுமுறை : இணையவழி மற்றும் நேரடி வகுப்புகள்)	13	72	4	22	1	6	0	0	0	0
5	Q 5	Fairness of the internal evaluation process by the teachers. ஆசிரியர்களின் உள்மதிப்பீட்டுத் திறம்	14	78	4	22	0	0	0	0	0	0
6	Q 6	The institute takes active interest in promoting internship, student exchange, field visit opportunities for students. மாணவர்களின் மேம்பாட்டிற்கு உதவும்	14	78	4	22	0	0	0	0	0	0

		களஆய்வுப்பணிகள், கருத்துரையாடல் போன்றவற்றில் தங்கள் துறையின் பங்களிப்பு											
7	Q 7	The teaching and mentoring process in your institution facilitates you in cognitive, social and emotional growth. (during online and blended mode classes) தங்களின் சிந்தனை, சமூகத்தொடர்பு, உணர்வு வெளிப்பாடு போன்றவற்றில், கற்றல் மற்றும் திறன் மேம்பாட்டினை வழங்குதலில் (தங்கள்) துறையின் கட்டமைப்பு வசதிகள்	13	72	4	22	1	6	0	0	0	0	0
8	Q 8	The teachers identify your strengths and encourage you with providing right level of challenges. தங்களின் திறமைகளைக் கண்டுணர்ந்து, ஊக்கமளித்து நல்வழிப்படுத்திய ஆசிரியர்களின் பங்களிப்பு	11	61	6	33	1	6	0	0	0	0	0
9	Q 9	Was your performance in assignments discussed with you? வழங்கப்பட்ட பாடப்பயிற்சிகளில் தங்களின் செயல்திறன் குறித்து கலந்துரையாடப்பட்டதா?	13	72	5	28	0	0	0	0	0	0	0
10	Q 10	Teachers inform you about your expected competencies, course outcomes and programme outcomes. தங்களின் எதிர்பார்ப்புக்கு ஏற்றார்போல் பாடம் மற்றும் பட்டப்படிப்பின் பயன்பாடுகள் அமைந்தமை குறித்து ஆசிரியர்கள் தெரிவித்துள்ளமை	12	67	6	33	0	0	0	0	0	0	0
11	Q 11	Your mentor does a necessary follow-up with an assigned task to you. தங்களின் மேம்பாட்டிற்குத் தேவையான பின்பற்றல்களை வழங்குவதில் தங்கள் நெறியாளரின் பங்களிப்பு	14	78	3	17	1	6	0	0	0	0	0
12	Q 12	The teachers illustrate the concepts through examples and applications. பாடப்பொருள்களை பொருத்தமான எடுத்துக்காட்டுகளுடன் ஆசிரியர்கள் விளக்கும் பாங்கு	13	72	5	28	0	0	0	0	0	0	0

13	Q 13	Teachers are able to identify your weaknesses and help you to overcome them. ஆசிரியர்கள் தங்களின் இயலாமையைக் கண்டுணர்ந்து அவற்றிலிருந்து விடுபடுவதற்கு உதவும் பாங்கு	16	89	2	11	0	0	0	0	0	0
14	Q 14	The institution provides multiple opportunities to learn and grow. தாங்கள் கற்கவும் மேம்படவும் தங்கள் துறை வழங்கியுள்ள பல்வேறு வகையான வாய்ப்புகள்	12	67	5	28	1	6	0	0	0	0
15	Q 15	[15. The institution makes effort to engage students in the monitoring, review and continuous quality improvement of the teaching learning process. (during online and offline classes) கற்றல், கற்பித்தல் செயல்பாடுகளில் மாணவர்களைக் கண்காணித்தல், மதிப்பிடுதல் மற்றும் தொடர்ச்சியான கல்வி மேம்பாடுகளில் தங்கள் துறை எடுத்துள்ள முயற்சிகள் (இணையவழி மற்றும் நேரடி வகுப்புகள்)	12	67	4	22	1	6	1	6	0	0
16	Q 16	Teachers encourage you to participate in extracurricular activities. தனித்திறன் வளர்ச்சியில் தங்களை ஈடுபடுத்திட ஆசிரியர்கள் வழங்கும் ஊக்கம்	12	67	5	28	1	6	0	0	0	0
17	Q 17	The overall quality of teaching-learning process in your institute is very good (online / offline classes) கற்றல் கற்பித்தலில் அனைத்துவகையான தகுதிகளிலும் தங்கள் துறையின் செயல்பாடு மிகச் சிறப்பு (இணையவழி மற்றும் நேரடி வகுப்புகள்)	10	56	6	33	2	11	0	0	0	
18	Q 18	The institute/ teachers use student centric methods, such as experiential learning, participative learning and problem solving methodologies for enhancing learning experiences. கல்வி மேம்பாட்டு அனுபவங்களுக்காக சோதனைமுறைக் கல்வி, பங்கேற்புக்கல்வி மற்றும் சிக்கல்களுக்கு தீர்வுகாணும் முறைமைகள் ஆகியன மாணவர்களை மையமாகக்கொண்டு	10	56	7	39	1	6	0	0	0	

		நடத்தப்படும் தங்கள் துறை மற்றும் ஆசிரியர்களின் பங்களிப்பு											
19	Q 19	Efforts are made by the institute/ teachers to inculcate soft skills, life skills and employability skills to make you ready for the world of work. உலகத்தின் பல்வேறுபட்ட பணிகளைச் சிறப்புடன் ஆற்றிடத் தங்களைத் தயார்படுத்தும் விதமாக மென்திறன், வாழ்வியல் திறன் மற்றும் வேலைவாய்ப்புத் தகுதி ஆகியவற்றைப் பெற்றிட தங்களின் துறை மற்றும் ஆசிரியர்கள் மேற்கொண்ட முயற்சி	10	56	7	39	1	6	0	0	0		
20	Q 20	The ICT tools such as Power point presentations, Multimedia usage, google class rooms / online meeting apps. etc. used by our department teachers is. பாடம் நடத்தும் துணைக் கருவிகளாக ஒலி/ஒளி கருவிகளின் பயன்பாடு, பவர்பாய்ண்ட், வலையொளி, இணையப் பயன்பாடு போன்றவற்றைப் பயன்படுத்துவதில் தங்கள் துறை ஆசிரியர்களின் பங்களிப்பு	14	78	4	22	0	0	0	0	0		
<b>TOTAL RESPONSES: 18/18</b>													

### SSS RESPONSES PG GEOGRAPHY 2023 - 24



**DEPARTMENT OF GEOGRAPHY PG 2023-24**

<b>S.No</b>	<b>Major Suggestions Made by Students</b>
1	Need for Interactive classes
2	Regular tests to be conducted
3	Opportunities to attend seminars and workshops
4	Technological advancement and Practical Knowledge
5	Job opportunities and External exposures

<b>S.No</b>	<b>Actions Taken</b>
1	Group discussion sessions and seminar hours are included in the timetable
2	Teachers are instructed to conduct regular slip tests and students asked to prepare question banks for objective type questions
3	Students will be permitted to attend
4	Up to date technological advancements are inserted in the practical syllabus for PG students
5	Internship are introduced as Extra credit courses, MOOC courses and IIRS e learning Outreach program are introduced for students



KUNTHAVAI NAACCHIYAAR GOVERNMENT ARTS COLLEGE FOR WOMEN, AUTONOMOUS, THANJAVUR – 7  
DEPARTMENT OF GEOGRAPHY

STUDENT SATISFACTION SURVEY REPORT 2023- 24

UG GEOGRAPHY

S No	QUESTION NO	QUESTIONS	RESPONSES RANK / %									
			4	%	3	%	2	%	1	%	0	%
1	Q1	How much of the syllabus was covered in the class? தங்கள் வகுப்பில் எவ்வளவு பாடத்திட்டம் நிறைவு செய்யப்பட்டுள்ளது?	86	82.69	12	11.54	6	5.77	0	0	0	0
2	Q2	How well did the teachers prepare for the classes? வகுப்புக்கு வரும் ஆசிரியர்களின் பாடத்தயாரிப்பு எவ்வாறு அமைந்துள்ளது?	52	50.00	41	39.42	4	3.85	2	1.92	5	4.81
3	Q3	How well were the teachers able to communicate? (Online / Offline classes) ஆசிரியர்களின் தொடர்பு திறன் எவ்வாறு அமைந்திருந்தது? (இணையவழி மற்றும் நேரடி வகுப்புகள்)	77	74.04	13	12.50	6	5.77	7	6.73	1	0.96
4	Q4	The teacher's approach to teaching can best be described as (Online / Offline classes) : ஆசிரியர்களின் சிறப்பாகப் பாடம் கற்பித்தலில் அணுகுமுறை : இணையவழி மற்றும் நேரடி வகுப்புகள்)	60	57.69	33	31.73	7	6.73	2	1.92	2	1.92



5	Q5	Fairness of the internal evaluation process by the teachers. ஆசிரியர்களின் உள்மதிப்பீட்டுத் திறம் :	70	67.31	24	23.08	4	3.85	3	2.88	3	2.88
6	Q6	The institute takes active interest in promoting internship, student exchange, field visit opportunities for students. மாணவர்களின் மேம்பாட்டிற்கு உதவும் களஆய்வுப்பணிகள், கருத்துரையாடல் போன்றவற்றில் தங்கள் துறையின் பங்களிப்பு:	70	67.31	25	24.04	6	5.77	3	2.88	0	0.00
7	Q7	The teaching and mentoring process in your institution facilitates you in cognitive, social and emotional growth. (during online and blended mode classes) தங்களின் சிந்தனை, சமூகத்தொடர்பு, உணர்வு வெளிப்பாடு போன்றவற்றில், கற்றல் மற்றும் திறன் மேம்பாட்டினை வழங்குதலில் (தங்கள்) துறையின் கட்டமைப்பு வசதிகள் :	63	60.58	28	26.92	9	8.65	4	3.85	0	0.00
8	Q8	The teachers identify your strengths and encourage you with providing right level of challenges. தங்களின் திறமைகளைக் கண்டுணர்ந்து, ஊக்கமளித்து நல்வழிப்படுத்திய ஆசிரியர்களின் பங்களிப்பு	58	55.77	30	28.85	10	9.62	3	2.88	3	2.88
9	Q9	Was your performance in assignments discussed with you? வழங்கப்பட்ட பாடப்பயிற்சிகளில் தங்களின் செயல்திறன் குறித்து கலந்துரையாடப்பட்டதா?	61	58.65	28	26.92	6	5.77	8	7.69	1	0.96

10	Q10	Teachers inform you about your expected competencies, course outcomes and programme outcomes. தங்களின் எதிர்பார்ப்புக்கு ஏற்றார்போல் பாடம் மற்றும் பட்டப்படிப்பின் பயன்பாடுகள் அமைந்தமை குறித்து ஆசிரியர்கள் தெரிவித்துள்ளமை :]	58	55.77	30	28.85	7	6.73	7	6.73	2	1.92
11	Q11	Your mentor does a necessary follow-up with an assigned task to you. தங்களின் மேம்பாட்டிற்குத் தேவையான பின்பற்றல்களை வழங்குவதில் தங்கள் நெறியாளரின் பங்களிப்பு :]	75	72.12	17	16.35	6	5.77	6	5.77	0	0.00
12	Q12	The teachers illustrate the concepts through examples and applications. பாடப்பொருள்களை பொருத்தமான எடுத்துக்காட்டுகளுடன் ஆசிரியர்கள் விளக்கும் பாங்கு :]	68	65.38	22	21.15	6	5.77	8	7.69	0	0.00
13	Q13	Teachers are able to identify your weaknesses and help you to overcome them. 13. ஆசிரியர்கள் தங்களின் இயலாமையைக் கண்டுணர்ந்து அவற்றிலிருந்து விடுபடுவதற்கு உதவும் பாங்கு :]	71	68.27	10	9.62	18	17.3 1	5	4.81	0	0.00
14	Q14	The institution provides multiple opportunities to learn and grow. தாங்கள் கற்கவும் மேம்படவும் தங்கள் துறை வழங்கியுள்ள பல்வேறு வகையான வாய்ப்புகள் :]	49	47.12	40	38.46	9	8.65	6	5.77	0	0.00

15	Q15	The institution makes effort to engage students in the monitoring, review and continuous quality improvement of the teaching learning process. (during online and offline classes) கற்றல், கற்பித்தல் செயல்பாடுகளில் மாணவர்களைக் கண்காணித்தல், மதிப்பிடுதல் மற்றும் தொடர்ச்சியான கல்வி மேம்பாடுகளில் தங்கள் துறை எடுத்துள்ள முயற்சிகள் (இணையவழி மற்றும் நேரடி வகுப்புகள்):]	66	63.46	24	23.08	5	4.81	8	7.69	1	0.96
16	Q16	Teachers encourage you to participate in extracurricular activities. தனித்திறன் வளர்ச்சியில் தங்களை ஈடுபடுத்திட ஆசிரியர்கள் வழங்கும் ஊக்கம் :]	65	62.50	23	22.12	13	12.50	3	2.88		0.00
17	Q17	The overall quality of teaching-learning process in your institute is very good (online / offline classes) கற்றல் கற்பித்தலில் அனைத்துவகையான தகுதிகளிலும் தங்கள் துறையின் செயல்பாடு மிகச் சிறப்பு (இணையவழி மற்றும் நேரடி வகுப்புகள்): :]	63	60.58	26	25.00	13	12.50	2	1.92	1	0.96
18	Q18	The institute/ teachers use student centric methods, such as experiential learning, participative learning and problem solving methodologies for enhancing learning experiences. கல்வி மேம்பாட்டு அனுபவங்களுக்காக சோதனைமுறைக் கல்வி, பங்கேற்புக்கல்வி மற்றும் சிக்கல்களுக்கு தீர்வுகாணும் முறைமைகள் ஆகியன மாணவர்களை	62	59.62	29	27.88	10	9.62	3	2.88	0	0.00

		மையமாகக்கொண்டு நடத்தப்படும் தங்கள் துறை மற்றும் ஆசிரியர்களின் பங்களிப்பு :]										
19	Q19	Efforts are made by the institute/ teachers to inculcate soft skills, life skills and employability skills to make you ready for the world of work. உலகத்தின் பல்வேறுபட்ட பணிகளைச் சிறப்புடன் ஆற்றிடத் தங்களைத் தயார்படுத்தும் விதமாக மென்திறன், வாழ்வியல் திறன் மற்றும் வேலைவாய்ப்புத் தகுதி ஆகியவற்றைப் பெற்றிட தங்களின் துறை மற்றும் ஆசிரியர்கள் மேற்கொண்ட முயற்சி	54	51.92	36	34.62	9	8.65	4	3.85	1	0.96
20	Q20	The ICT tools such as Power point presentations, Multimedia usage, google class rooms / online meeting apps. etc. used by our department teachers is. பாடம் நடத்தும் துணைக் கருவிகளாக ஒலி/ஒளி கருவிகளின் பயன்பாடு, பவர்பாய்ண்ட், வலையொளி, இணையப் பயன்பாடு போன்றவற்றைப் பயன்படுத்துவதில் தங்கள் துறை ஆசிரியர்களின் பங்களிப்பு :]	72	69.23	15	14.42	9	8.65	7	6.73	1	0.96
<b>TOTAL RESPONSES: 104</b>												



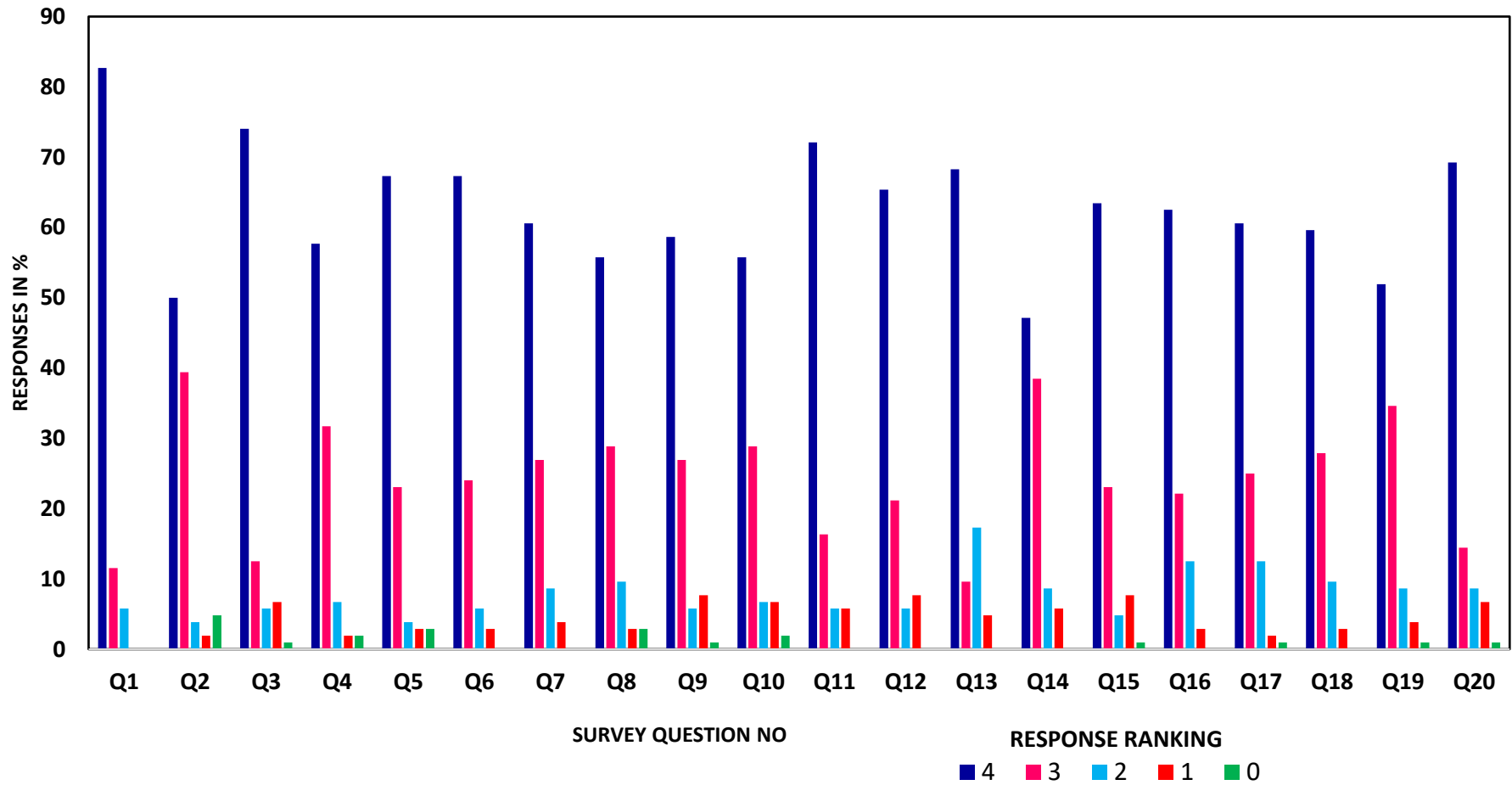
**KUNTHAVAI NAACCHIYAAR GOVERNMENT ARTS COLLEGE FOR WOMEN, AUTONOMOUS, THANJAVUR – 7**  
**DEPARTMENT OF GEOGRAPHY**

**STUDENT SATISFACTION SURVEY REPORT 2023- 24 (NAAN MUDHALVAN COURSES)**

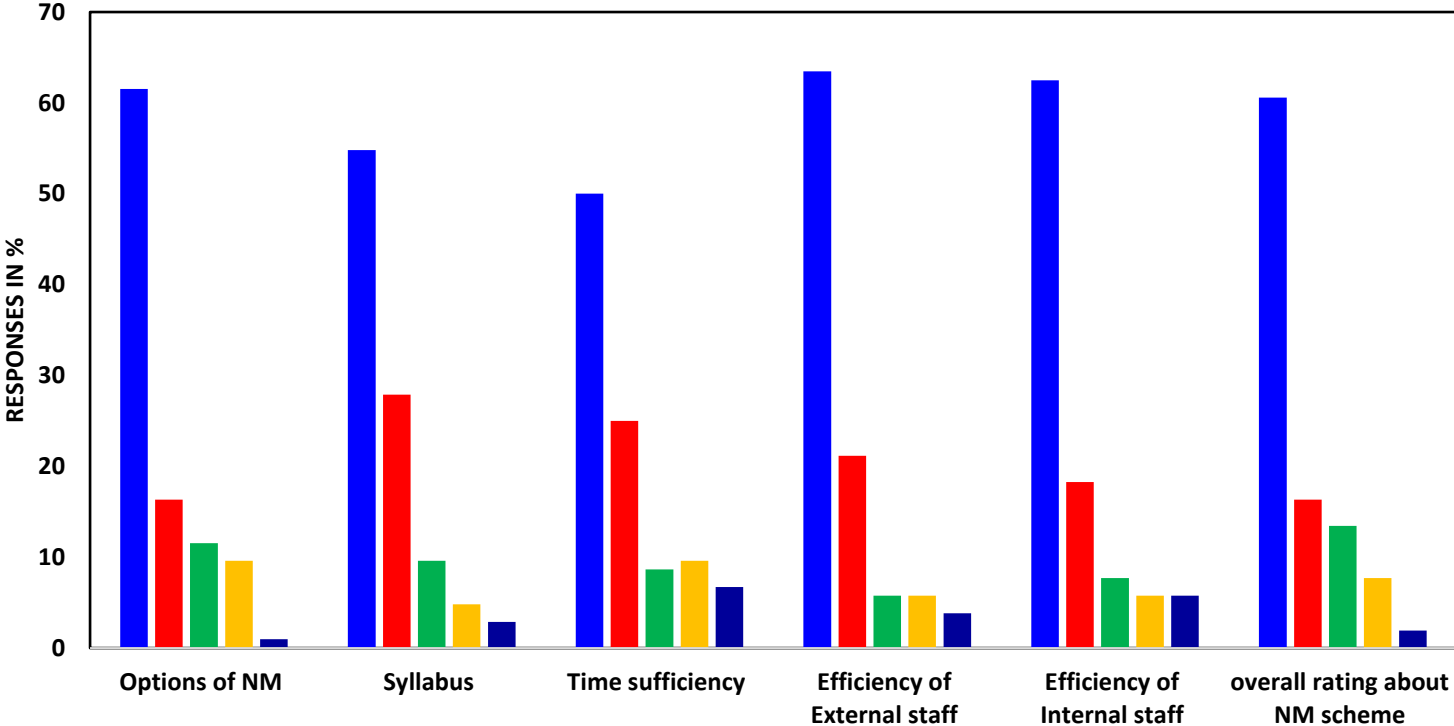
**UG GEOGRAPHY**

S.NO	QUESTIONS	RESPONSES RANK / %									
		4	%	3	%	2	%	1	%	0	%
1	Options of NM	64	62	17	16	12	12	10	10	1	1
2	Syllabus	57	55	29	28	10	10	5	5	3	3
3	Time sufficiency	52	50	26	25	9	9	10	10	7	7
4	Efficiency of External staff	66	63	22	21	6	6	6	6	4	4
5	Efficiency of Internal staff	65	63	19	18	8	8	6	6	6	6
6	overall rating about NM scheme	63	61	17	16	14	13	8	8	2	2

### SSS RESPONSES UG GEOGRAPHY 2023- 24



**SSS RESPONSES ON NAAN MUDHALVAN COURSES - UG GEOGRAPHY 2023 - 24**



RESPONSE RANKING      ■ 4   ■ 3   ■ 2   ■ 1   ■ 0

**DEPARTMENT OF GEOGRAPHY UG 2023-24**

<b>S.No</b>	<b>Major Suggestions Made by Students</b>
1	More Interaction Classes needed
2	Internal Seminars for Students suggested
3	Doubt clearing sessions are asked for
4	Improvement in Learning infrastructure
5	Job opportunities and Training

<b>S.No</b>	<b>Actions Taken</b>
1	GD hours included in the Timetable
2	Seminar hours and Quiz hours are added in the timetable
3	Teachers are instructed to have doubt clearing time in the end of every class
4	ICT is made compulsory for all the classes, Library books are made available to all students.
5	Internship for UG students introduced, ICT enabled NM Training classes are made available for students



# KUNTHAVAI NAACCHIYAAR GOVERNMENT ARTS COLLEGE FOR WOMEN, THANJAVUR



## STUDENT SATISFACTION SURVEY REPORT ON 2023-2024

### DEPARTMENT OF HISTORY

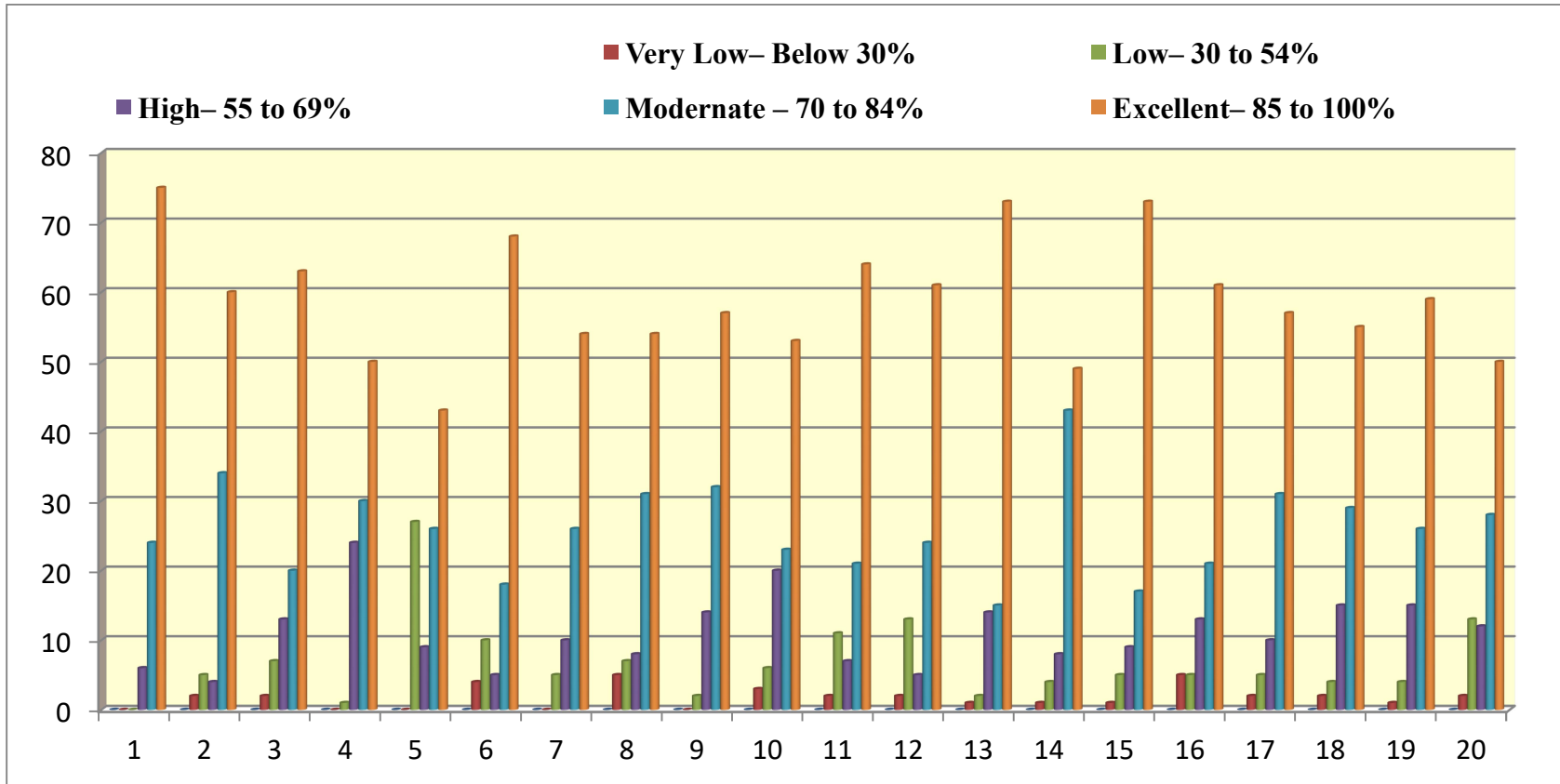
**Academic Year: 2023 – 2024 Total Respondent : 105**

S.No	Questions	Response - 0	Response - 1	Response - 2	Response - 3	Response - 4
1	How much of the syllabus was covered in the class?	<b>0 – Below 30%</b>	<b>1– 30 to 54%</b>	<b>2 – 55 to 69%</b>	<b>3 – 70 to 84%</b>	<b>4 – 85 to 100%</b>
		<b>Nil</b>	<b>Nil</b>	<b>6</b>	<b>24</b>	<b>75</b>
2	How well did the teachers prepare for the classes?	0 – Won't teach at all	1 – Indifferently	2 – Poorly	3 – Satisfactorily	4 –Thoroughly
		<b>2</b>	<b>5</b>	<b>4</b>	<b>34</b>	<b>60</b>
3	How well were the teachers able to communicate? (Online / Offline classes)	0– Very poor communication	1– Generally ineffective	2 – Just satisfactorily	3 – Sometimes effective	4 – Always effective
		<b>2</b>	<b>7</b>	<b>13</b>	<b>20</b>	<b>63</b>
4	The teacher's approach to teaching can best be described as (Online / Offline classes)	0 - Poor	1 - Fair	2 - Good	3 - Very Good	4 - Excellent
		<b>Nil</b>	<b>1</b>	<b>24</b>	<b>30</b>	<b>50</b>
5	Fairness of the internal evaluation process by the teachers.	0– Unfair	1 – Usually unfair	2 – Sometimes unfair	3 – Usually fair	4 – Always fair
		<b>Nil</b>	<b>27</b>	<b>9</b>	<b>26</b>	<b>43</b>
6	The institute takes active interest in promoting internship, student exchange, field visit opportunities for students.	0– Never	1 – Rarely	2 – Sometimes	3 – Usually	4 – Every time
		<b>4</b>	<b>10</b>	<b>5</b>	<b>18</b>	<b>68</b>
7	The teaching and mentoring process in your institution facilitates you in cognitive, social and emotional growth.	0– Never	1 – Rarely	2 – Sometimes	3 – Usually	4 – Every time
		<b>Nil</b>	<b>5</b>	<b>10</b>	<b>26</b>	<b>54</b>

	(during online and blended mode classes)					
8	The teachers identify your strengths and encourage you with providing right level of challenges.	0– Never	1 – Rarely	2 – Sometimes	3 – Usually	4 – Every time
		<b>5</b>	<b>7</b>	<b>8</b>	<b>31</b>	<b>54</b>
9	Was your performance in assignments discussed with you?	0 – Strongly Disagree	1 - Disagree	2- Neutral	3 - Agree	4 - Strongly Agree
		<b>Nil</b>	<b>2</b>	<b>14</b>	<b>32</b>	<b>57</b>
10	Teachers inform you about your expected competencies, course outcomes and programme outcomes.	0 – Strongly Disagree	1 - Disagree	2 - Neutral	3 - Agree	4 - Strongly Agree
		<b>3</b>	<b>6</b>	<b>20</b>	<b>23</b>	<b>53</b>
11	Your mentor does a necessary follow-up with an assigned task to you.	0 – Not at all	1 – Very little	2 - Somewhat	3 - Moderate	4 – To a Great extent
		<b>2</b>	<b>11</b>	<b>7</b>	<b>21</b>	<b>64</b>
12	The teachers illustrate the concepts through examples and applications.	0 – Not at all	1 – Very little	2 - Somewhat	3 - Moderate	4 – To a Great extent
		<b>2</b>	<b>13</b>	<b>5</b>	<b>24</b>	<b>61</b>
13	Teachers are able to identify your weaknesses and help you to overcome them.	0 - Never	1 - Rarely	2 - Occasionally/ Sometimes	3 - Often	4 - Regularly
		<b>1</b>	<b>2</b>	<b>14</b>	<b>15</b>	<b>73</b>
14	The institution provides multiple opportunities to learn and grow.	0 – Not at all	1 -Marginally	2 - Moderately	3 – Very well	4 - Significantly
		<b>1</b>	<b>4</b>	<b>8</b>	<b>43</b>	<b>49</b>
15	The institution makes effort to engage students in the monitoring, review and continuous quality	0 - Unable	1 -Slightly	2 -Partially	3 -Reasonably	4 -Fully
		<b>1</b>	<b>5</b>	<b>9</b>	<b>17</b>	<b>73</b>

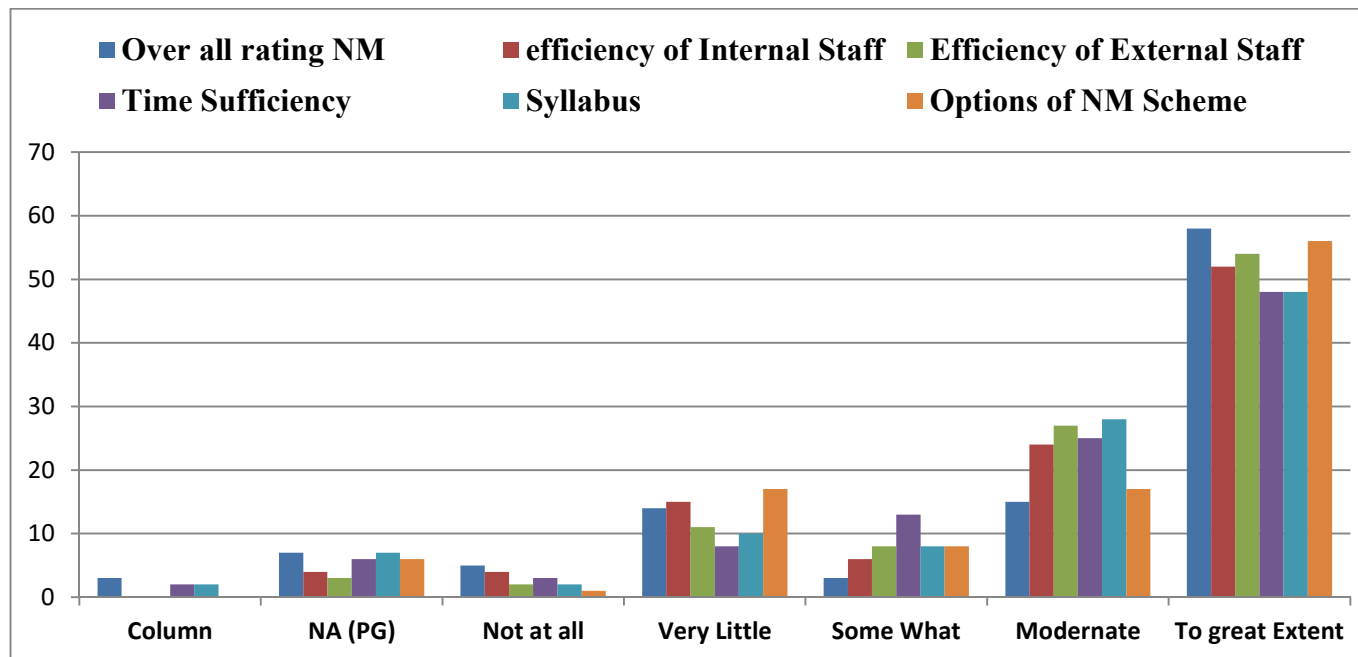
	improvement of the teaching learning process. (during online and offline classes)					
16	Teachers encourage you to participate in extracurricular activities.	0 - Never	1 - Rarely	2 - Occasionally/ Sometimes	3 - Usually	4 - Every time
		<b>5</b>	<b>5</b>	<b>13</b>	<b>21</b>	<b>61</b>
17	The overall quality of teaching-learning process in your institute is very good (online / offline classes)	0 - Never	1 - Rarely	2 - Occasionally/ Sometimes	3 - Usually	4 - Every time
		<b>2</b>	<b>5</b>	<b>10</b>	<b>31</b>	<b>57</b>
18	The institute/ teachers use student centric methods, such as experiential learning, participative learning and problem solving methodologies for enhancing learning experiences.	0 – Strongly Disagree	1 - Disagree	2- Neutral	3 - Agree	4 - Strongly Agree
		<b>2</b>	<b>4</b>	<b>15</b>	<b>29</b>	<b>55</b>
19	Efforts are made by the institute/ teachers to inculcate soft skills, life skills and employability skills to make you ready for the world of work.	0 – Strongly Disagree	1 - Disagree	2 - Neutral	3 - Agree	4 - Strongly Agree
		<b>1</b>	<b>4</b>	<b>15</b>	<b>26</b>	<b>59</b>
20	The ICT tools such as Power point presentations, Multimedia usage, Google class rooms / online meeting apps. etc. used by our department teachers is.	0 – Not at all	1 – Very little	2 - Somewhat	3 - Moderate	4 – To a Great extent
		<b>2</b>	<b>13</b>	<b>12</b>	<b>28</b>	<b>50</b>

## STUDENT SATISFACTORY SURVEY REPORT ON 2023-2024



## HISTORY STUDENT NM COURSE FEEDBACK

NM Course Feed Back	Column	NA (PG)	Not at all	Very Little	Some What	Modernate	To great Extent
Over all rating NM	3	7	5	14	3	15	58
efficiency of Internal Staff	0	4	4	15	6	24	52
Efficiency of External Staff	0	3	2	11	8	27	54
Time Sufficiency	2	6	3	8	13	25	48
Syllabus	2	7	2	10	8	28	48
Options of NM Scheme	0	6	1	17	8	17	56





**KUNTHAVAI NAACCHIYAAR GOVERNMENT ARTS COLLEGE FOR WOMEN,  
THANJAVUR-7**

**STUDENT SATISFACTION SURVEY REPORT ON 2023-2024**

**DEPARTMENT OF HISTORY**

**Give three observation / Suggestions to improve the overall teaching – Learning experience in your Department. (Consolidation)**

**Major Suggestions made by Students**

<b>S.No</b>	<b>MAJOR SUGGESTIONS MADE BY STUDENTS</b>	<b>ACTION TAKEN</b>
1.	Extra-Curricular Activity	Students will be further encouraged to participate in co-curricular activities
2.	Providing ICT based Classes	It will be provided for the students in sufficient manner
3.	Interactive Sessions	It is suggested to keep atleast one class in 15 days general discussion with students
4.	Infrastructure Facility	Efforts are being made to increase the infrastructure facilities
5.	Field Survey	Teachers will Engage student in research project field survey and various outreach programs
6.	Clearing Doubts	Teachers are suggested to clear the doubts of the student on the classroom
7.	Course outcomes and programme outcomes	Completion of the programme will acquire the following qualities skills attitudes and values

**Kunthavai Naacchiyaar Govt. Arts College for Women (Autonomous), Thanjavur**  
**Student Satisfaction Survey (Online) Report – Department of Mathematics**

**Academic Year 2023-2024: UG - Respondents: 378**

S.No	Questions	Option (0)	Option (1)	Option (2)	Option(3)	Option(4)
1	How much of the syllabus was covered in the class?	Below 30%	30 to 54%	55 to 69%	70 to 84%	85 to 100%
		<b>Nil</b>	<b>1.06</b>	<b>7.14</b>	<b>26.20</b>	<b>65.61</b>
2	How well did the teachers prepare for the classes?	Won't teach at all	Indifferently	Poorly	Satisfactorily	Thoroughly
		<b>Nil</b>	<b>1.59</b>	<b>4.76</b>	<b>52.12</b>	<b>41.53</b>
3	How well were the teachers able to communicate?	Very poor communication	Generally ineffective	Just satisfactorily	Sometimes effective	Always effective
		<b>0.26</b>	<b>0.26</b>	<b>13.76</b>	<b>21.16</b>	<b>64.29</b>
4	The teacher's approach to teaching can best be described as	Poor	Fair	Good	Very good	Excellent
		<b>0.26</b>	<b>2.12</b>	<b>19.05</b>	<b>32.01</b>	<b>46.56</b>
5	Fairness of the internal evaluation process by the teachers.	fair	Usually unfair	Sometimes unfair	Usually fair	Always fair
		<b>0.79</b>	<b>1.59</b>	<b>7.67</b>	<b>32.01</b>	<b>57.94</b>
6	Teachers inform you about your expected competencies, course outcomes and programme outcomes	Never	Rarely	Sometimes	Usually	Everytime
		<b>0.53</b>	<b>3.17</b>	<b>5.03</b>	<b>33.33</b>	<b>57.94</b>
7	The teachers illustrate the concepts through examples and applications.	Never	Rarely	Sometimes	Usually	Everytime
		<b>2.12</b>	<b>5.56</b>	<b>6.61</b>	<b>28.84</b>	<b>56.88</b>
8	Teachers are able to identify your weaknesses and help you to overcome them	Never	Rarely	Sometimes	Usually	Everytime
		<b>2.12</b>	<b>4.50</b>	<b>7.41</b>	<b>30.16</b>	<b>55.82</b>

S.No	Questions	Option (0)	Option (1)	Option (2)	Option(3)	Option(4)
9	Teachers encourage you to participate in extracurricular activities.	Strongly disagree	Disagree	Neutral	Agree	Strongly Agree
		<b>Nil</b>	<b>1.32</b>	<b>7.94</b>	<b>29.63</b>	<b>61.11</b>
10	The overall quality of teaching-learning process in your institute is very good (online / offline classes)	Strongly disagree	Disagree	Neutral	Agree	Strongly Agree
		<b>Nil</b>	<b>1.32</b>	<b>11.11</b>	<b>33.33</b>	<b>54.23</b>
11	The institute/ teachers use student centric methods, such as experiential learning, participative learning and problem solving methodologies for enhancing learning experiences	Not at all	Very little	Somewhat	Moderate	To a great extent
		<b>1.59</b>	<b>3.44</b>	<b>5.03</b>	<b>34.13</b>	<b>55.82</b>
12	Efforts are made by the institute/ teachers to inculcate soft skills, life skills and employability skills to make you ready for the world of work.	Not at all	Very little	Somewhat	Moderate	To a great extent
		<b>0.26</b>	<b>2.12</b>	<b>7.14</b>	<b>30.42</b>	<b>60.05</b>
13	The institute takes active interest in promoting internship, student exchange, field visit opportunities for students.	Never	Rarely	Sometimes	Often	Regularly
		<b>1.06</b>	<b>1.06</b>	<b>11.38</b>	<b>20.63</b>	<b>65.87</b>
14	The teaching and mentoring process in your institution facilitates you in cognitive, social and emotional growth. (during online and blended mode classes)	Not at all	Marginally	Moderately	Very well	Significantly
		<b>0.79</b>	<b>1.85</b>	<b>11.64</b>	<b>41.27</b>	<b>44.44</b>
15	The teachers identify your strengths and encourage you with providing right level of challenges.	Unable to	Slightly	Partially	Reasonably	Fully
		<b>1.85</b>	<b>2.38</b>	<b>6.35</b>	<b>29.63</b>	<b>59.78</b>
16	Was your performance in	Never	Rarely	Sometimes	Usually	Everytime



	assignments discussed with you?	<b>1.85</b>	<b>3.70</b>	<b>6.88</b>	<b>33.07</b>	<b>54.50</b>
17	Your mentor does a necessary follow-up with an assigned task to you.	Never	Rarely	Sometimes	Usually	Everytime
		<b>0.26</b>	<b>3.44</b>	<b>7.94</b>	<b>31.48</b>	<b>56.88</b>
18	The institution provides multip grow	Strongly disagree	Disagree	Neutral	Agree	Strongly Agree
		<b>Nil</b>	<b>1.59</b>	<b>7.94</b>	<b>37.30</b>	<b>53.17</b>
19	The institution makes effort to engage students in the monitoring, review and continuous quality improvement of the teaching learning process. (during online and offline classes)	Strongly disagree	Disagree	Neutral	Agree	Strongly Agree
		<b>Nil</b>	<b>1.32</b>	<b>11.64</b>	<b>30.95</b>	<b>56.08</b>
20	The ICT tools such as Power point presentations, Multimedia usage, google class rooms / online meeting apps. etc. used by our department teachers is	Not at all	Very little	Somewhat	Moderate	To a great extent
		<b>5.29</b>	<b>4.23</b>	<b>8.99</b>	<b>30.42</b>	<b>50.79</b>
21	Give three observation / suggestions to improve the overall teaching – learning experience in your institution by considering both online and offline classes.	Strongly disagree	Disagree	Neutral	Agree	Strongly Agree
		<b>1.85</b>	<b>2.91</b>	<b>4.76</b>	<b>24.60</b>	<b>65.87</b>
22	Efficiency of External staff	Not at all	Very little	Somewhat	Moderate	To a great extent
		<b>1.06</b>	<b>1.59</b>	<b>10.31</b>	<b>26.72</b>	<b>60.32</b>
23	Efficiency of Internal staff	Not at all	Very little	Somewhat	Moderate	To a great extent

		<b>0.27</b>	<b>1.59</b>	<b>3.70</b>	<b>35.45</b>	<b>58.99</b>
24	overall rating about NM scheme	Not at all	Very little	Somewhat	Moderate	To a great extent
		<b>2.64</b>	<b>6.61</b>	<b>10.85</b>	<b>37.30</b>	<b>42.59</b>
25	Impact of Naan Mudhalvan Scheme	Not at all	Very little	Somewhat	Moderate	To a great extent
		<b>1.59</b>	<b>3.71</b>	<b>6.61</b>	<b>27.51</b>	<b>60.58</b>

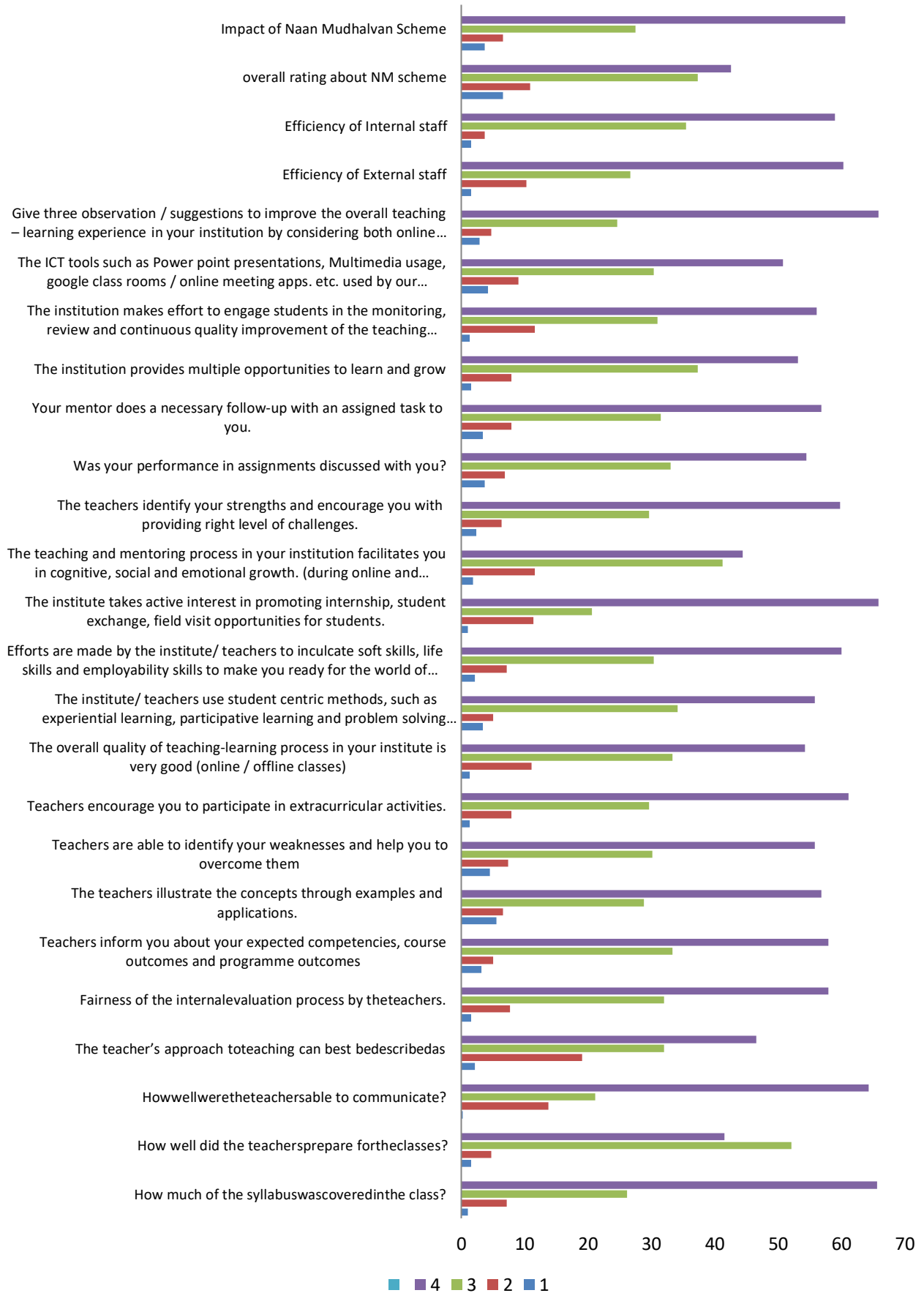
**Academic Year 2023-2024: PG - Respondents: 76**

S.No	Questions	Option (0)	Option (1)	Option (2)	Option(3)	Option(4)
1	How much of the syllabus was covered in the class?	Below 30%	30 to 54%	55 to 69%	70 to 84%	85 to 100%
		<b>Nil</b>	<b>5.26</b>	<b>7.89</b>	<b>36.84</b>	<b>50</b>
2	How well did the teachers prepare for the classes?	Won't teach at all	Indifferently	Poorly	Satisfactorily	Thoroughly
		<b>Nil</b>	<b>2.63</b>	<b>1.32</b>	<b>68.42</b>	<b>27.63</b>
3	How well were the teachers able to communicate?	Very poor communication	Generally ineffective	Just satisfactorily	Sometimes effective	Always effective
		<b>Nil</b>	<b>2.63</b>	<b>14.47</b>	<b>35.53</b>	<b>48.68</b>
4	The teacher's approach to teaching can best be described as	Poor	Fair	Good	Very good	Excellent
		<b>Nil</b>	<b>2.63</b>	<b>22.37</b>	<b>39.47</b>	<b>48.68</b>
5	Fairness of the internal evaluation process by the teachers.	Unfair	Usually unfair	Sometimes unfair	Usually fair	Always fair
		<b>Nil</b>	<b>2.63</b>	<b>5.26</b>	<b>35.53</b>	<b>56.58</b>
6	Teachers inform you about your expected competencies, course outcomes and programme outcomes	Never	Rarely	Sometimes	Usually	Everytime
		<b>Nil</b>	<b>1.32</b>	<b>5.26</b>	<b>38.16</b>	<b>55.26</b>
7	The teachers illustrate the concepts through examples and applications.	Never	Rarely	Sometimes	Usually	Everytime
		<b>1.32</b>	<b>3.95</b>	<b>3.95</b>	<b>48.68</b>	<b>42.11</b>

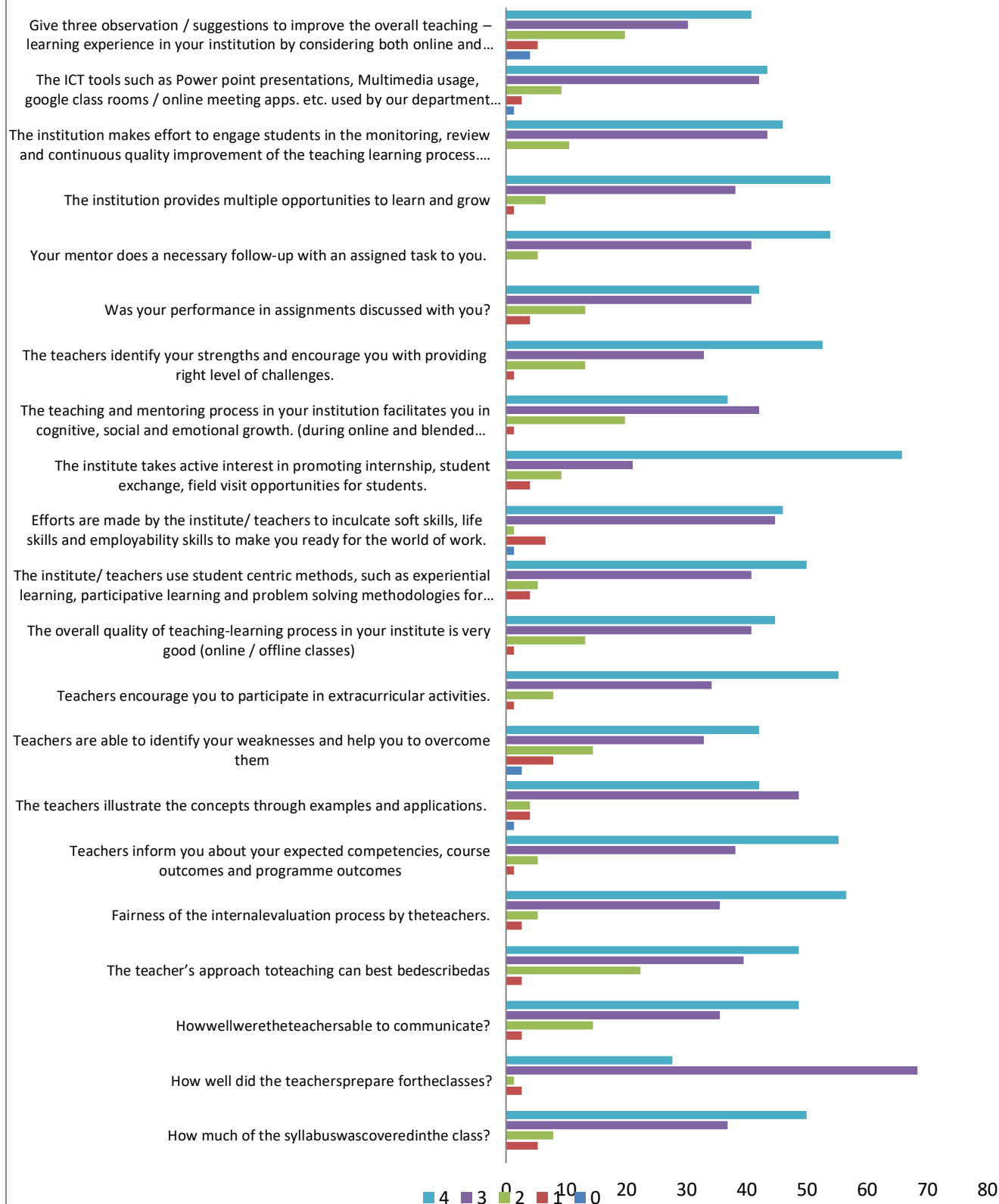
8	Teachers are able to identify your weaknesses and help you to overcome them	Never	Rarely	Sometimes	Usually	Everytime
		<b>2.63</b>	<b>7.89</b>	<b>14.47</b>	<b>32.89</b>	<b>42.11</b>
9	Teachers encourage you to participate in extracurricular activities.	Strongly disagree	Disagree	Neutral	Agree	Strongly Agree
		<b>Nil</b>	<b>1.32</b>	<b>7.89</b>	<b>34.21</b>	<b>55.26</b>
10	The overall quality of teaching-learning process in your institute is very good (online / offline classes)	Strongly disagree	Disagree	Neutral	Agree	Strongly Agree
		<b>Nil</b>	<b>1.32</b>	<b>13.16</b>	<b>40.79</b>	<b>44.74</b>
11	The institute/ teachers use student centric methods, such as experiential learning, participative learning and problem solving methodologies for enhancing learning experiences	Not at all	Very little	Somewhat	Moderate	To a great extent
		<b>Nil</b>	<b>3.95</b>	<b>5.26</b>	<b>40.79</b>	<b>50</b>
12	Efforts are made by the institute/ teachers to inculcate soft skills, life skills and employability skills to make you ready for the world of work.	Not at all	Very little	Somewhat	Moderate	To a great extent
		<b>1.32</b>	<b>6.58</b>	<b>1.32</b>	<b>44.74</b>	<b>46.05</b>
13	The institute takes active interest in promoting internship, student exchange, field visit opportunities for students.	Never	Rarely	Sometimes	Often	Regularly
		<b>Nil</b>	<b>3.95</b>	<b>9.21</b>	<b>21.05</b>	<b>65.79</b>
14	The teaching and mentoring process in your institution facilitates you in cognitive, social and emotional growth. (during online and blended mode classes)	Not at all	Marginally	Moderately	Verywell	Significantly
		<b>Nil</b>	<b>1.32</b>	<b>19.74</b>	<b>42.11</b>	<b>36.84</b>
15	The teachers identify your strengths and encourage you with	Unable to	Slightly	Partially	Reasonably	Fully

	providing right level of challenges.	<b>Nil</b>	<b>1.32</b>	<b>13.16</b>	<b>32.89</b>	<b>52.63</b>
16	Was your performance in assignments discussed with you?	Never	Rarely	Sometimes	Usually	Everytime
		<b>Nil</b>	<b>3.95</b>	<b>13.16</b>	<b>40.79</b>	<b>42.11</b>
17	Your mentor does a necessary follow-up with an assigned task to you.	Never	Rarely	Sometimes	Usually	Everytime
		Nil	Nil	5.26	40.79	53.95
18	The institution provides multiple grow	Strongly disagree	Disagree	Neutral	Agree	Strongly Agree
		<b>Nil</b>	<b>1.32</b>	<b>6.58</b>	<b>38.16</b>	<b>53.95</b>
19	The institution makes effort to engage students in the monitoring, review and continuous quality improvement of the teaching learning process. (during online and offline classes)	Strongly disagree	Disagree	Neutral	Agree	Strongly Agree
		<b>Nil</b>	<b>Nil</b>	<b>10.53</b>	<b>43.42</b>	<b>46.05</b>
20	The ICT tools such as Power point presentations, Multimedia usage, google class rooms / online meeting apps. etc. used by our department teachers is	Not at all	Very little	Somewhat	Moderate	To a great extent
		<b>1.32</b>	<b>2.63</b>	<b>9.21</b>	<b>42.11</b>	<b>43.42</b>
21	Give three observation / suggestions to improve the overall teaching – learning experience in your institution by considering both online and offline classes.	Strongly disagree	Disagree	Neutral	Agree	Strongly Agree
		<b>3.95</b>	<b>5.26</b>	<b>19.74</b>	<b>30.26</b>	<b>40.79</b>

**DEPARTMENT OF MATHEMATICS**  
**STUDENTS SATISFACTION SURVEY: UG RESPONSES 2023 - 2024**



**DEPARTMENT OF MATHEMATICS**  
**STUDENTS SATISFACTION SURVEY : PG RESPONSES 2023 - 2024**



S. No	MAJOR SUGGESTIONS BY STUDENTS	ACTION TAKEN
1.	Proper Smart class rooms, Computer devices on Lab required	Smart class room and Computers are available in our department.
2.	Improve our college technique systems	Should be implemented according to the institution infrastructure and syllabus.
3.	Complete the whole syllabus within a time	Our staff members are finished the portion for first $2\frac{1}{2}$ units in Internal assessment I and remaining $2\frac{1}{2}$ units in Internal assessment II. Now steps will be taken to speed up the portion coverage within a time frame.
4.	Wifi connection required	It is provided our Department and Lab.
5.	Give one hour for extracurricular activities in every week	Steps Taken
6.	Class Tutors takes a paper atleast one period in every day	It will be considered
7.	Department Library has no sufficient books.	We have sufficient books for 2022-2023 batch syllabus. The few books are not available to purchase for 2023-2024 batch .
8.	To develop Educated Skills	It has been given as Internship for UG and PG students in 2023-2024 batch.
9.	Use better graphics and visualize about the syllabus	Steps were taken to teach the syllabus in this way.
10.	To explain practically with example about the syllabus	Practical applications with examples are given as seminars, assignments and project works.

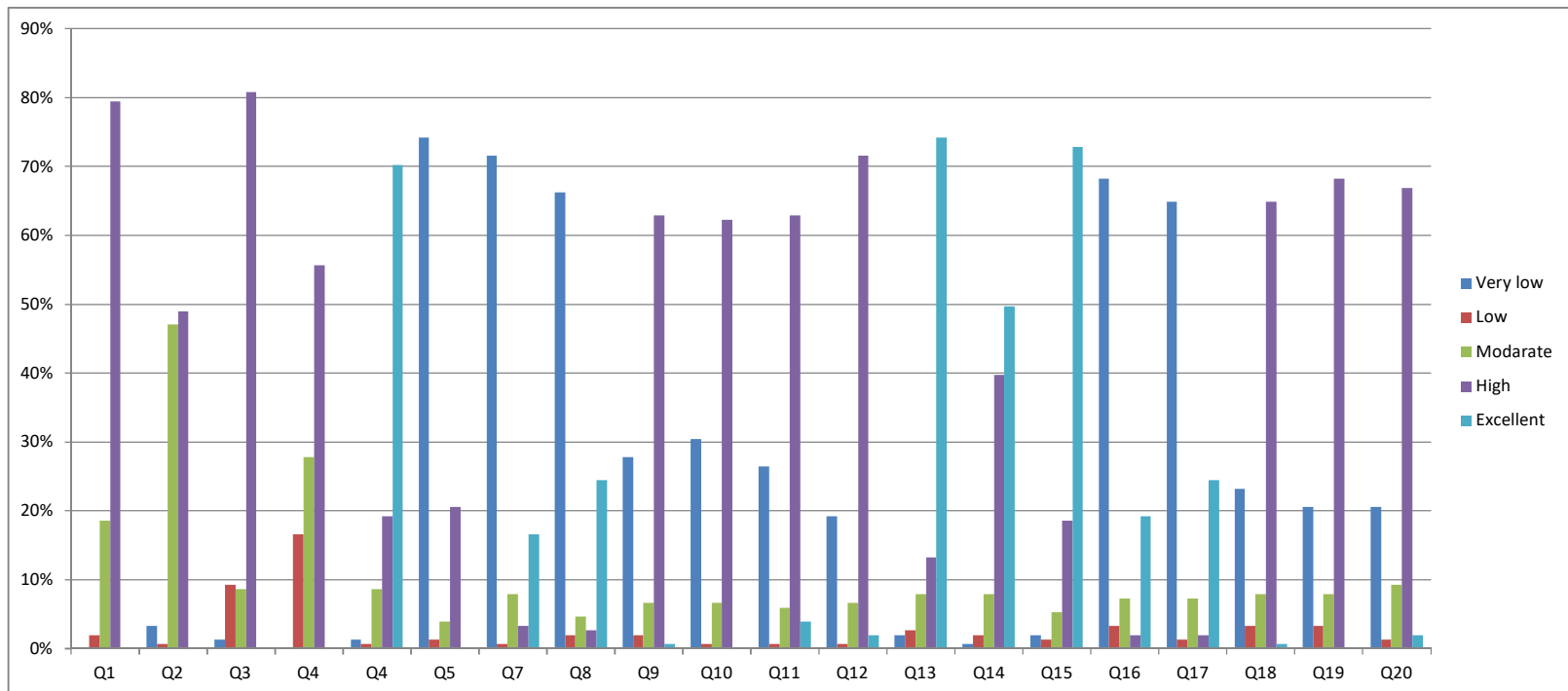
**Kunthavai Naachiyar Government Arts College For Women (Autonomous), Thanjavur-7**

**Department of Physics - SSS Report (2023-24)**

S.No	Questions	Option 1	Option 2	Option 3	Option 4	Option 5	Question	Very low	Low	Modarate	High	Excellent
1	How much of the syllabus was covered in the class	0	3	28	120	0	Q1	0%	2%	19%	79%	0%
2	How well did the teachers prepare for the classes?	5	1	71	74	0	Q2	3%	1%	47%	49%	0%
3	How well were the teachers able to communicate?	2	14	13	122	0	Q3	1%	9%	9%	81%	0%
4	The teacher's approach to teaching can best be described as	0	25	42	84	0	Q4	0%	17%	28%	56%	0%
5	Fairness of the internal evaluation process by the teachers	2	1	13	29	106	Q4	1%	1%	9%	19%	70%
6	Teachers inform you about your expected competencies, course outcomes and programme outcomes	112	2	6	31	0	Q5	74%	1%	4%	21%	0%
7	The teachers illustrate the concepts through examples and applications	108	1	12	5	25	Q7	72%	1%	8%	3%	17%



8	Teachers are able to identify your weaknesses and help you to overcome them	100	3	7	4	37	Q8	66%	2%	5%	3%	25%
9	Teachers encourage you to participate in extracurricular activities	42	3	10	95	1	Q9	28%	2%	7%	63%	1%
10	The overall quality of teaching-learning process in your institute is very good (online / offline classes)	46	1	10	94	0	Q10	30%	1%	7%	62%	0%
11	The institute/ teachers use student centric methods, such as experiential learning, participative learning and problem solving methodologies for enhancing learning experiences	40	1	9	95	6	Q11	26%	1%	6%	63%	4%
12	Efforts are made by the institute/ teachers to inculcate soft skills, life skills and employability skills to make you ready for the world of work	29	1	10	108	3	Q12	19%	1%	7%	72%	2%
13	Impact of Naan Mudhalvan Scheme	3	4	12	20	112	Q13	2%	3%	8%	13%	74%
14	Options of NM	1	3	12	60	75	Q14	1%	2%	8%	40%	50%
15	Syllabus	3	2	8	28	110	Q15	2%	1%	5%	19%	73%
16	Time sufficiency	103	5	11	3	29	Q16	68%	3%	7%	2%	19%
17	The institute takes active interest in promoting internship, student exchange, field visit opportunities for students	98	2	11	3	37	Q17	65%	1%	7%	2%	25%
18	The teaching and mentoring process in your institution facilitates you in cognitive, social and emotional growth. (during online and blended mode classes)	35	5	12	98	1	Q18	23%	3%	8%	65%	1%
19	The teachers identify your strengths and encourage you with providing right level of challenges.	31	5	12	103	0	Q19	21%	3%	8%	68%	0%
20	Was your performance in assignments discussed with you?	31	2	14	101	3	Q20	21%	1%	9%	67%	2%



**Major Sugesstions made by the student**

1. Need Wi-Fi facilities
2. Separate smart class to be necessary
3. Need individual computer for M.Sc. Student
4. Job opportunities and training programme

**Action Taken**

1. ICT made compulsory for all classes
2. Wi-Fi facilities proposal sent to government
3. Intership is introduced as extra credit courses for students
4. Group discussions are initiated

**Kunthavai Naacchiyaar Govt. Arts College for Women (Autonomous),  
Thanjavur Student Satisfaction Survey (Online) Report - Under Graduate**

**Academic Year 2023 – 2024: Total Respondents: 48  
Department of Statistics**

S.No	Questions	Option (0)	Option (1)	Option (2)	Option(3)	Option(4)
1	How much of the syllabus was covered in the class?	0 –Below 30%	1– 30 to 54%	2 – 55 to 69%	3 – 70 to 84%	4 – 85 to 100%
		0	2	21	33	44
2	How well did the teachers prepare for the classes?	0 – Won't teach at all	1 – Indifferently	2 – Poorly	3 – Satisfactorily	4 –Thoroughly
		0	4	4	50	42
3	How well were the teachers able to communicate?	0– Very poor communication	1– Generally ineffective	2 – Just satisfactorily	3 – Sometimes effective	4 – Always effective
		0	13	8	44	35
4	The teacher's approach to teaching can best be described as.	0– Poor	1 – Fair	2 – Good	3 – Very good	4– Excellent
		0	2	29	25	44
5	Fairness of the internal evaluation process by the teachers.	0– Unfair	1 – Usually unfair	2 – Sometimes unfair	3 – Usually fair	4 – Always fair
		0	2	10	43	44
6	Teachers inform you about you expected competencies, course outcomes and programme outcomes.	Never	Rarely	Occasionally/ Sometimes	Usually	Every time
		2	2	10	36	50

S.No	Questions	Option (0)	Option (1)	Option (2)	Option(3)	Option(4)
7	The teachers illustrate the concepts through examples and applications.	Never	Rarely	Occasionally/ Sometimes	Usually	Every time
		2	4	17	40	37
8	Teachers are able to identify your weaknesses and help you to overcome them.	Never	Rarely	Occasionally/ Sometimes	Usually	Every time
		6	4	13	17	60
9	Teachers encourage you to participate in extracurricular activities.	Strongly disagree	Disagree	Neutral	Agree	Strongly agree
		0	2	13	25	60
10	The overall quality of teaching-learning process in your department is very good. (online/offline classes).	Strongly disagree	Disagree	Neutral	Agree	Strongly agree
		0	2	17	33	48
11	The institute/ teachers use student centric methods, such as experiential learning, participative learning and problem solving methodologies for enhancing learning experiences.	Not at all	Very little	Somewhat	Moderate	To a great extent
		6	2	8	27	57
12	Efforts are made by the institute/ teachers to inculcate soft skills, life skills and employability skills to make you ready for the world of work.	Not at all	Very little	Somewhat	Moderate	To a great extent
		4	6	15	19	56
13	Impact of Naan Mudhalvan Scheme (PG students Choose 'NA' to submit your feedback) [Options of NM]	Not at all	Very little	Somewhat	Moderate	To a great extent
		0	0	13	17	70

S.No	Questions	Option (0)	Option (1)	Option (2)	Option(3)	Option(4)
14	syllabus	Not at all	Very little	Somewhat	Moderate	To a great extent
		2	6	4	42	46
15	Time sufficiency	Not at all	Very little	Somewhat	Moderate	To a great extent
		1	1	11	31	56
16	The institute takes active interest in promoting internship, student exchange, field visit opportunities for students.	0– Never	1 – Rarely	2 – Sometimes	3 – Often	4 – Regularly
		6	6	21	15	52
17	The teaching and mentoring process in your institution facilitates you in cognitive, social and emotional growth. (during online and blended mode classes)	0– Not at all	1 – Marginally	2 – Moderately	3 – Very well	4 – Significantly
		4	2	8	30	56
18	The teachers identify your strengths and encourage you with providing right level of challenges.	Unable to	Slightly	Partially	Reassembly	Fully
		0	2	13	25	60
19	Was your performance in assignments discussed with you?	Never	Rarely	Occasionally/ Sometimes	Usually	Every time
		4	0	8	30	58
20	Your mentor does a necessary follow-up with an assigned task to you.	Never	Rarely	Occasionally/ Sometimes	Usually	Every time
		4	13	4	27	52

S.No	Questions	Option (0)	Option (1)	Option (2)	Option(3)	Option(4)
21	The institution provides multiple opportunities to learn and grow.	Strongly disagree	Disagree	Neutral	Agree	Strongly agree
		4	10	4	36	46
22	The institution makes effort to engage students in the monitoring , review and continuous quality improvements of the teaching learning process. (during online and offline classes)	Strongly disagree	Disagree	Neutral	Agree	Strongly agree
		8	6	15	10	56
23	The ICT tools such as Power point presentations, Multimedia usage, google class rooms / online meetingapps. etc. used by our department teachers is.	Not at all	Very little	Somewhat	Moderate	To a great extent
		8	13	17	25	37
24	Efficiency of external staff	Not at all	Very little	Somewhat	Moderate	To a great extent
		4	10	19	21	46
25	Efficiency of internal staff	Not at all	Very little	Somewhat	Moderate	To a great extent
		4	10	2	17	67
26	Overall rating about NM scheme.	Not at all	Very little	Somewhat	Moderate	To a great extent
		4	4	4	19	69

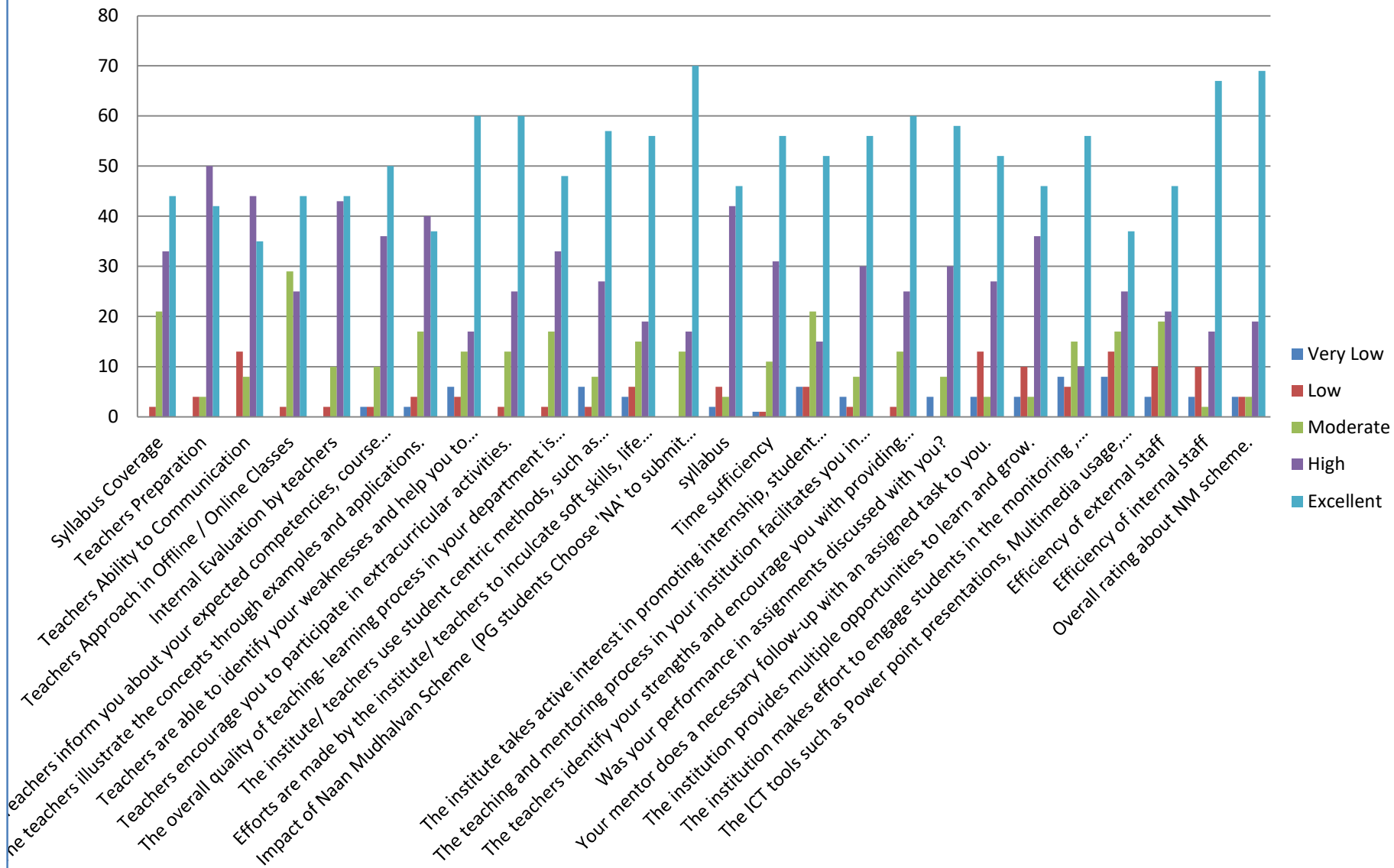
**Responses assessed by every department individually for appropriate action and reports filed. The overall assessment of the institution based on:**

The teaching and mentoring process in the institution is strengthened through Tutor ward System to improve Cognitive, Social and Emotional growth among students. (During online and blended mode classes). **(Question No.7)**

Teachers identify the Slow Learners and improve their quality with a better academic performance through the Internal Assessment Examinations. **(Question No.13)**

S.No	Major Suggestions Made by Students	Actions Taken
1	Permanent Classroom and Perfect Laboratory	One new block with 12 Class rooms& 3 Laboratory is in usage and another New Block with sufficient class rooms and Laboratory facility is under construction.
2	ICT Enabled classes	Curriculum designing under progress for Board of Studies 2022-23 to incorporate ICT enabled classes and Internship / Field Visit enabled Curriculum Department wise actions have been taken and filed.
3	Development in Multidisciplinary knowledge.	Add on course is implemented in 2022 – 2023 Curriculum design.
4	Skill Based Assignments, Seminars, Day to Day update.	Unit VI with Current Updates and Applications in relevant fields is included in 2022 – 2023 Curriculum.
5	Awareness related to Employability, Higher Studies, Competitive Examinations,	Seminars and Awareness Programmes were conducted by Career Guidance and Placement Cell.
6	Encouragement to Participation in Extra Curricular activities	<b>Entrepreneur Development Centre</b> is functioning with <b>Food Court and Hand Made Crafts</b> to make the Students as <b>Small Scale Business Holders.</b>
7	Drinking water and Cleanliness	PWD works intensified for drinking, rest room and other infrastructure facilities

## Students Satisfactory Survey - UG & PG Responses for 2023-2024





**Kunthavai Naacchiyaar Govt. Arts College for Women (Autonomous), Thanjavur**  
**Student Satisfaction Survey (Online) Report – Department of Tamil**

**Academic Year 2023-2024: UG&PG Total Respondents: 107**

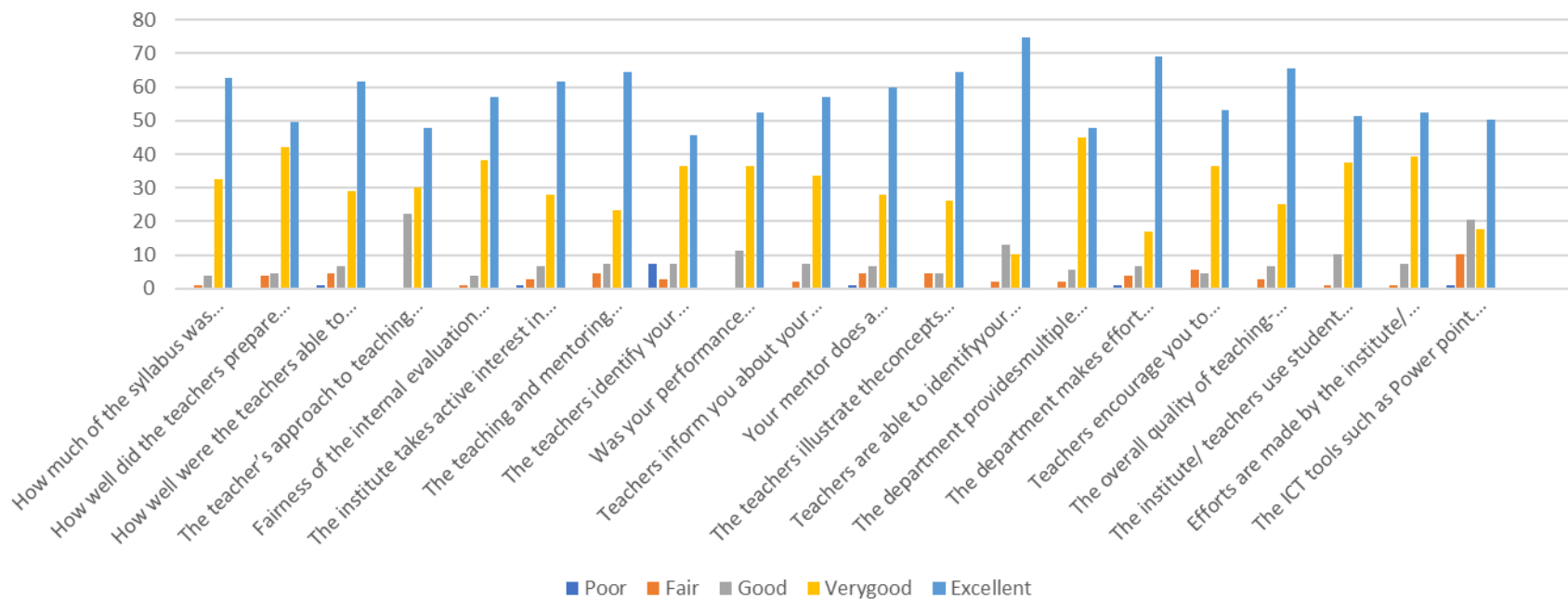
S.No	Questions	Option (0)	Option (1)	Option (2)	Option(3)	Option(4)
1	How much of the syllabus was covered in the class?	0 –Below 30%	1– 30 to 54%	2 – 55 to 69%	3 – 70 to 84%	4 – 85 to 100%
		<b>Nil</b>	<b>0.93</b>	<b>3.73</b>	<b>32.71</b>	<b>62.61</b>
2	How well did the teachers prepare for the classes?	0 – Won't teach at all	1 – Indifferently	2 – Poorly	3 – Satisfactorily	4 –Thoroughly
		<b>Nil</b>	<b>3.73</b>	<b>4.67</b>	<b>42.05</b>	<b>49.53</b>
3	How well were the teachers able to communicate?	0– Very poor communication	1– Generally ineffective	2 – Just satisfactorily	3 – Sometimes effective	4 – Always effective
		<b>0.93</b>	<b>4.67</b>	<b>6.54</b>	<b>28.97</b>	<b>61.68</b>
4	The teacher's approach to teaching can best be described as	0– Poor	1 – Fair	2 – Good	3 – Very good	4– Excellent
		<b>Nil</b>	<b>Nil</b>	<b>22.42</b>	<b>29.90</b>	<b>47.66</b>
5	Fairness of the internal evaluation process by the teachers.	0– Unfair	1 – Usually unfair	2 – Sometimes unfair	3 – Usually fair	4 – Always fair
		<b>Nil</b>	<b>0.93</b>	<b>3.73</b>	<b>38.31</b>	<b>57.00</b>
6	The institute takes active interest in promoting internship, student exchange, field visit opportunities for students.	0– Never	1 – Rarely	2 – Sometimes	3 – Often	4 – Regularly
		<b>0.93</b>	<b>2.80</b>	<b>6.54</b>	<b>28.03</b>	<b>61.68</b>
7	The teaching and mentoring process in your institution facilitates you in cognitive, social and emotional growth. (during online and blended mode classes)	0– Not at all	1 – Marginally	2 – Moderately	3 – Very well	4 – Significantly
		<b>Nil</b>	<b>4.67</b>	<b>7.47</b>	<b>23.3</b>	<b>64.48</b>
8	The teachers identify your strengths and encourage you with providing right level of challenges.	0– Unable to	1 – Slightly	2 – Partially	3 – Reasonably	4 – Fully
		<b>7.47</b>	<b>2.80</b>	<b>7.47</b>	<b>36.44</b>	<b>45.79</b>

S.No	Questions	Option (0)	Option (1)	Option (2)	Option(3)	Option(4)
9	Was your performance in assignments discussed with you?	Never	Rarely	Occasionally/ Sometimes	Usually	Every time
		<b>Nil</b>	<b>Nil</b>	<b>11.12</b>	<b>36.44</b>	<b>52.33</b>
10	Teachers inform you about your expected competencies, course outcomes and programme outcomes.	Never	Rarely	Occasionally/ Sometimes	Usually	Every time
		<b>Nil</b>	<b>1.86</b>	<b>7.47</b>	<b>33.64</b>	<b>57.00</b>
11	Your mentor does a necessary follow-up with an assigned task to you.	Never	Rarely	Occasionally/ Sometimes	Usually	Every time
		<b>0.93</b>	<b>4.67</b>	<b>6.54</b>	<b>28.03</b>	<b>59.81</b>
12	The teachers illustrate the concepts through examples and applications.	Never	Rarely	Occasionally/ Sometimes	Usually	Every time
		<b>Nil</b>	<b>4.67</b>	<b>4.67</b>	<b>26.16</b>	<b>64.48</b>
13	Teachers are able to identify your weaknesses and help you to overcome them.	Never	Rarely	Occasionally/ Sometimes	Usually	Every time
		<b>Nil</b>	<b>1.86</b>	<b>13.08</b>	<b>10.28</b>	<b>74.76</b>
14	The department provides multiple opportunities to learn and grow.	Strongly disagree	Disagree	Neutral	Agree	Strongly agree
		<b>Nil</b>	<b>1.86</b>	<b>5.60</b>	<b>44.85</b>	<b>47.66</b>
15	The department makes effort to engage students in the monitoring, review and continuous quality improvement of the teaching learning process.	Strongly disagree	Disagree	Neutral	Agree	Strongly agree
		<b>0.93</b>	<b>3.73</b>	<b>6.54</b>	<b>16.82</b>	<b>69.15</b>
16	Teachers encourage you to participate in extracurricular activities.	Strongly disagree	Disagree	Neutral	Agree	Strongly agree
		<b>Nil</b>	<b>5.60</b>	<b>4.67</b>	<b>36.44</b>	<b>53.27</b>
17	The overall quality of teaching- learning process in your department is very good.	Strongly disagree	Disagree	Neutral	Agree	Strongly agree
		<b>Nil</b>	<b>2.80</b>	<b>6.54</b>	<b>25.23</b>	<b>65.42</b>

S.No	Questions	Option (0)	Option (1)	Option (2)	Option(3)	Option(4)
18	The institute/ teachers use student centric methods, such as experiential learning, participative learning and problem solving methodologies for enhancing learning experiences.	Not at all	Very little	Somewhat	Moderate	To a great extent
		<b>Nil</b>	<b>0.93</b>	<b>10.28</b>	<b>37.38</b>	<b>51.40</b>
19	Efforts are made by the institute/ teachers to inculcate soft skills, life skills and employability skills to make you ready for the world of work.	Not at all	Very little	Somewhat	Moderate	To a great extent
		<b>Nil</b>	<b>0.93</b>	<b>7.47</b>	<b>39.25</b>	<b>52.33</b>
20	The ICT tools such as Power point presentations, Multimedia usage, google class rooms / online meeting apps. etc. used by our department teachers is.	Not at all	Very little	Somewhat	Moderate	To a great extent
		<b>0.93</b>	<b>10.28</b>	<b>20.56</b>	<b>17.75</b>	<b>50.46</b>

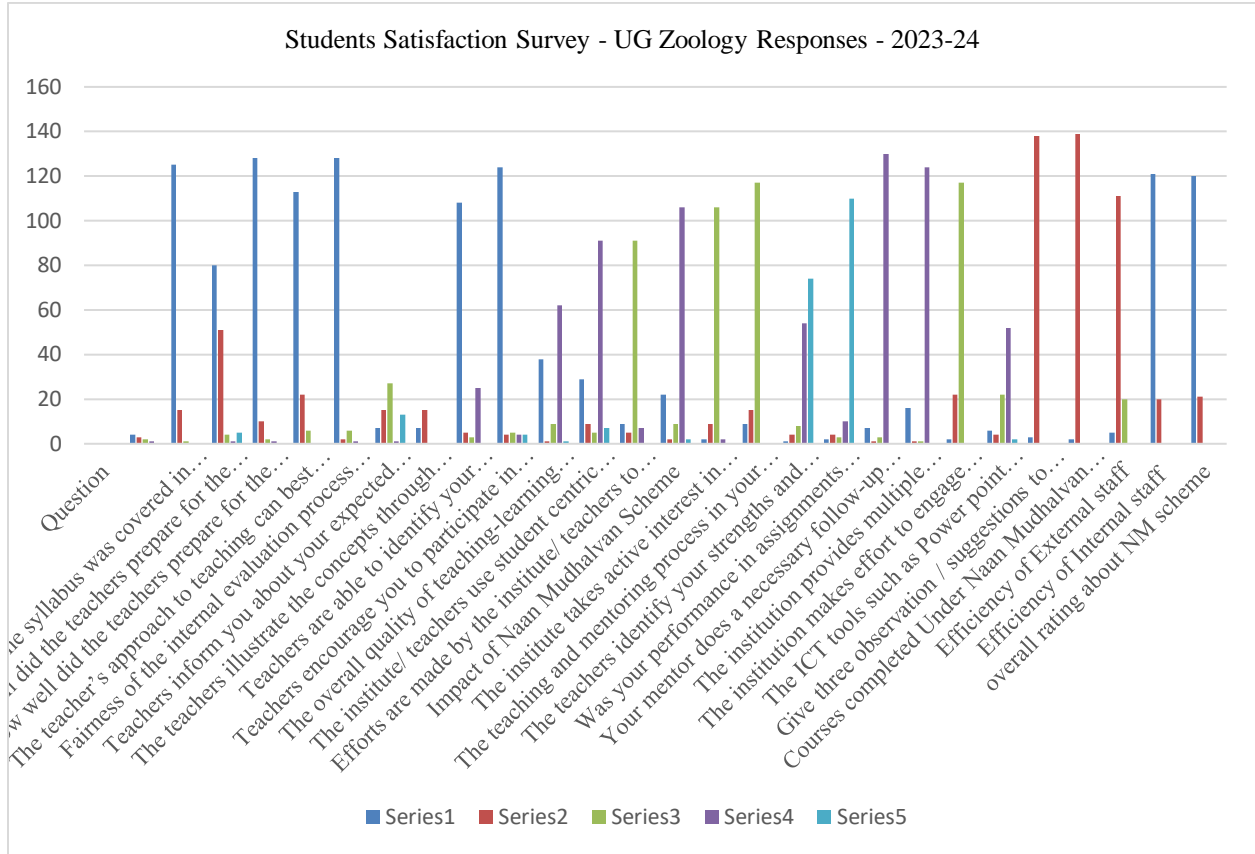
S.No	Major Suggestion Made by Students	Actions Taken
1.	Coaching classes TNPSC Coaching classes	Further to the feedback given by some of the students to support with coaching for TNPSC/Competitive Exams We are proposing to tie up with some of the institutes and Experts in the subject. We would be soon coming up with sessions for a trial run.
2	Providing ICT Based Classes	Smart Class room is in usage and it will be provided for the Students in Sufficient Manner.

### Students Satisfaction Survey 2023-2024



DEPARTMENT OF ZOOLOGY

SSS REPORT 2023-2024



S. No	MAJOR SUGGESTIONS BY STUDENTS	ACTIONS TAKEN
1.	Job facilities	Placement cell organizes job fair/Placement drive. From the Department the curriculum is enriched to face UGC-NET examinations, CSIR, SET and TNPSC Examinations. Curriculums also designed for Skill development, Entrepreneurship and Employability
2.	Easy to understand	ICT tools, Power point presentation implemented for better learning
3.	Extra hours for smart class	In the class time table-ICT class will be included
4.	Extra practical Classes	Apart from demonstration of Practical, Repetition classes along video clippings are conducted.
5.	More Lab hours	Apart from the stipulated practical class repetition classes will be conducted.
6.	Daily test and group activity	Remedial classes for all students.
7.	Skill Development	Naan Muthalvan Courses and soft Skill and Development Programmes
8.	Lab Equipments	Laboratory equipments are available for practical class and research work